



Local Agency Formation Commission  
for the County of Los Angeles

## LOCAL AGENCY FORMATION COMMISSION MEETING AGENDA

Wednesday, October 10, 2012  
9:00 a.m.

### Room 381B

Kenneth Hahn Hall of Administration  
500 West Temple Street, Los Angeles 90012

Commission  
Jerry Gladbach  
Chair

Richard H. Close  
Donald L. Dear  
Margaret Finlay  
Tom LaBonge  
Gloria Molina  
Henri F. Pellissier  
David Spence  
Zev Yaroslavsky

Alternates  
Lori Brogin  
Lillian Kawasaki  
Don Knabe  
Paul Krekorian  
Gerard McCallum  
Judith Mitchell

Staff  
Paul A. Novak, AICP  
Executive Officer

June D. Savala  
Deputy  
Executive Officer

Amber De La Torre  
Doug Dorado  
Michael Henderson  
Alisha O'Brien  
Patricia Wood

80 South Lake Avenue  
Suite 870  
Pasadena, CA 91101  
Phone: 626-204-6500  
Fax: 626-204-6507

[www.lalafco.org](http://www.lalafco.org)

\*\*\*\*\*

A person with a disability may contact the LAFCO office at (626) 204-6500 at least 72 hours before the scheduled meeting to request receipt of an agenda in an alternative format or to request disability-related accommodations, including auxiliary aids or services, in order to participate in the public meeting. Later requests will be accommodated to the extent feasible.

The entire agenda package and any meeting related writings or documents provided to a majority of the Commissioners after distribution of the agenda package, unless exempt from disclosure pursuant to California Law, are available at the LAFCO office and at [www.lalafco.org](http://www.lalafco.org).

\*\*\*\*\*

1. **CALL MEETING TO ORDER**
2. **PLEDGE OF ALLEGIANCE WILL BE LED BY CHAIR GLADBACH**
3. **DISCLOSURE OF CAMPAIGN CONTRIBUTION(S)**
4. **SWEARING-IN OF SPEAKER(S)**
5. **CONSENT ITEMS**

*All matters are approved by one motion unless held by a Commissioner or member(s) of the public for discussion or separate action.*

- a. Approve Minutes of September 12, 2012.
  - b. Operating Account Check Register for the month of September 2012.
  - c. Receive and file update on pending applications.
6. **PUBLIC HEARING(S)**
    - a. Annexation No. 2011-22 to the City of Santa Clarita (North Copperhill).

- b. Reconfirmation of the Municipal Service Reviews (MSRs) and Spheres of Influence (SOI) for Cities and Special Districts with a Conterminous Sphere of Influence.

7. **PROTEST HEARING(S)**

- a. Annexation No. 367 to Los Angeles County Sanitation District No. 14.
- b. Annexation No. 408 to Los Angeles County Sanitation District No. 14.
- c. Annexation No. 718 to Los Angeles County Sanitation District No. 21.
- d. Annexation No. 1011 to Santa Clarita Valley Sanitation District of Los Angeles County.
- e. Annexation No. 1016 to Santa Clarita Valley Sanitation District of Los Angeles County.

8. **OTHER ITEMS**

9. **COMMISSIONERS' REPORT**

Commissioners' questions for staff, announcements of upcoming events and opportunity for Commissioners to briefly report on their LAFCO-related activities since last meeting.

10. **EXECUTIVE OFFICER'S REPORT**

Executive Officer's announcement of upcoming events and brief report on activities of the Executive Officer since the last meeting.

- a. Special District Risk Management Authority (SDRMA) Acknowledgement  
(No Worker's Compensation claims in previous 5 years)

11. **PUBLIC COMMENT**

This is the opportunity for members of the public to address the Commission on items not on the posted agenda, provided that the subject matter is within the jurisdiction of the Commission. Speakers are reminded of the three-minute time limitation.

12. **FUTURE MEETINGS**

November 14, 2012  
December, 12, 2012  
January 9, 2013  
February 13, 2013

13. **FUTURE AGENDA ITEMS**

Items not on the posted agenda which, if requested, will be referred to staff or placed on a future agenda for discussion and action by the Commission.

\*\*\*\*\*

**NOTICE OF CLOSED SESSION**

**CS-1 CONFERENCE WITH LEGAL COUNSEL – ANTICIPATED LITIGATION**

(Subdivision (b) of Government Code Section 54956.9)  
Significant exposure to litigation (one case)

\*\*\*\*\*

14. **ADJOURNMENT MOTION**

**LAFCO 03**  
**Operating Account Register Report**  
September 1 - 28, 2012

Type	Date	Num	Name	Memo	Amount	Balance
<b>10000 Cash Unrestricted</b>						
<b>10003 Operating Account</b>						
Bill Pmt -Chec	09/05/2012	6322	Accountemps		-337.73	-337.73
Bill Pmt -Chec	09/05/2012	6323	Ampco System Parking	Cust#6992630, 09/01/12-09/30/12	-595.00	-932.73
Bill Pmt -Chec	09/05/2012	6324	CALAFCO"	CALAFCO Conference - 2012, L. E	-405.00	-1,337.73
Bill Pmt -Chec	09/05/2012	6325	Chevron and Texaco Busine	7898685099	-219.94	-1,557.67
Bill Pmt -Chec	09/05/2012	6326	County Counsel	LAFCO Legal Services: July 2012	-4,628.60	-6,186.27
Bill Pmt -Chec	09/05/2012	6327	Daily Journal	Cust# 1124120362	-100.30	-6,286.57
Bill Pmt -Chec	09/05/2012	6328	Exxon-Mobil	Acct# 7187 3582 7206 4975, Augu	-99.20	-6,385.77
Bill Pmt -Chec	09/05/2012	6329	Farmers Insurance Exchange	Policy# 30 60502-68-64, 2nd paym	-869.50	-7,255.27
Bill Pmt -Chec	09/05/2012	6330	LACERA	VOID: August 2012	0.00	-7,255.27
Bill Pmt -Chec	09/05/2012	6331	Office Depot*		-1,044.84	-8,300.11
Bill Pmt -Chec	09/05/2012	6332	Western Graphix	PO# De La Torre	-199.12	-8,499.23
General Journ	09/06/2012	JE186		T4-A Cash Management Wire Trar	150,000.00	141,500.77
Bill Pmt -Chec	09/13/2012	6333	Accountemps	Cust# 00490-001923000, G. Duch	-186.10	141,314.67
Bill Pmt -Chec	09/13/2012	6334	CoreLogic	Acct# 200-694038-RR657541-2	-53.98	141,260.69
Bill Pmt -Chec	09/13/2012	6335	Daily Journal	Cust# 1124120362	-118.99	141,141.70
Bill Pmt -Chec	09/13/2012	6336	Digital West Networks, Inc.	Acct# 1252, Service: 09/01/12-10/	-55.00	141,086.70
Bill Pmt -Chec	09/13/2012	6337	King Data	Service for: 09/01/12-09/30/12	-229.25	140,857.45
Bill Pmt -Chec	09/13/2012	6338	LACERA	Larry J. Calemine, August 2012	-533.93	140,323.52
Bill Pmt -Chec	09/13/2012	6339	MetLife*	Certificate# 0003242935, P. Novak	-282.48	140,041.04
Bill Pmt -Chec	09/13/2012	6340	Office Depot*	Acct# 32368442	-87.75	139,953.29
Bill Pmt -Chec	09/13/2012	6341	Ricoh Americas Corp	036-0027688-000	-1,561.04	138,392.25
Bill Pmt -Chec	09/13/2012	6342	S.D.R.M.A.	7352	-1,646.03	136,746.22
Check	09/14/2012	DM	Employee Salaries	Septembe 1-15, 2012	-16,273.80	120,472.42
Check	09/14/2012	DM	Federal Tax Deposit	September 14, 2012 payroll	-3,840.52	116,631.90
Check	09/14/2012	DM	State Income Tax	September 14, 2012 payroll	-980.48	115,651.42
Check	09/14/2012	DM	ADP	September 14, 2012 payroll	-116.83	115,534.59
Deposit	09/24/2012			Deposit	5,000.00	120,534.59
Bill Pmt -Chec	09/25/2012	6343	Hogle-Ireland	Services: 07/01/12-07/31/12	-32,240.00	88,294.59
Bill Pmt -Chec	09/26/2012	6344	Office Depot*		-268.42	88,026.17
Bill Pmt -Chec	09/26/2012	6345	80 South Lake LLC	NO000758-1	-6,308.90	81,717.27
Bill Pmt -Chec	09/26/2012	6346	Accountemps		-421.05	81,296.22
Bill Pmt -Chec	09/26/2012	6347	ATT	Acct# 990566760, 08/10/12-09/09/	-307.83	80,988.39
Bill Pmt -Chec	09/26/2012	6348	Bank of America*		-998.25	79,990.14
Bill Pmt -Chec	09/26/2012	6349	Daily Journal		-550.50	79,439.64
Bill Pmt -Chec	09/26/2012	6350	FedEx*	Acct#1244-7035-8	-173.80	79,265.84
Bill Pmt -Chec	09/26/2012	6351	June Savala	CALAFCO U CEQA Expenses	-66.00	79,199.84
Bill Pmt -Chec	09/26/2012	6352	Mail Finance	Lease#N07061692D, 10/12/12-11/	-126.17	79,073.67
Bill Pmt -Chec	09/26/2012	6353	Paul A. Novak	CALAFCO CEQA Expenses	-89.25	78,984.42
Bill Pmt -Chec	09/26/2012	6354	TelePacific Communications	Acct#120143, 09/09/12-10/08/12	-507.62	78,476.80
Bill Pmt -Chec	09/26/2012	6355	Tropical Interior Plants	Service for August	-100.00	78,376.80
Bill Pmt -Chec	09/26/2012	6356	White Nelson Diehl Evans	Services rendered for period 08/31	-2,000.00	76,376.80
Bill Pmt -Chec	09/26/2012	6357	Amber DeLaTorre*	CALAFCO U CEQA for LAFCO Sa	-44.36	76,332.44
Bill Pmt -Chec	09/26/2012	6358	Computer Troubleshooters Glendale		-2,360.00	73,972.44
Bill Pmt -Chec	09/26/2012	6359	Daily Journal	Annexation 2011-22	-298.00	73,674.44
Check	09/28/2012	48533687	Lori W. Brogin	Stipend, September12, 2012	-147.83	73,526.61
Check	09/28/2012	448522688	Richard Close	Stipend, September 12, 2012	-147.82	73,378.79
Check	09/28/2012	48533689	Margaret E. Finlay	Stipend, September 12, 2012	-147.82	73,230.97
Check	09/28/2012	48533690	Edward G. Gladbach	Stipend, September 12, 2012	-147.82	73,083.15
Check	09/28/2012	48533691	Judith Mitchell	Stipend, September 12, 2012	-147.83	72,935.32
Check	09/28/2012	48533692	Henri F. Pellissier	Stipend, September 12, 2012	-147.82	72,787.50
Check	09/28/2012	48533693	Zev Yaroslavsky	Stipend, September 12, 2012	-147.83	72,639.67
Check	09/28/2012	DM	Employee Salaries	Septembe 16-30, 2012	-16,273.81	56,365.86
Check	09/28/2012	DM	Donald L. Dear	Stipend September 12, 2012	-147.83	56,218.03
Check	09/28/2012	DM	Thomas J LaBonge	Stipend September 12, 2012	-147.83	56,070.20
Check	09/28/2012	DM	Gerard McCallum II	Stipend, September 12, 2012	-147.82	55,922.38
Check	09/28/2012	DM	David Spence	Stipend September 12, 2012	-147.82	55,774.56
Check	09/28/2012	DM	Federal Tax Deposit	September 28, 2012 payroll	-3,888.36	51,886.20
Check	09/28/2012	DM	State Income Tax	September 28, 2012 payroll	-980.48	50,905.72
Check	09/28/2012	DM	ADP	September 28, 2012 payroll	-139.31	50,766.41
Total 10003 Operating Account					<u>50,766.41</u>	<u>50,766.41</u>
Total 10000 Cash Unrestricted					<u>50,766.41</u>	<u>50,766.41</u>
<b>TOTAL</b>					<u><b>50,766.41</b></u>	<u><b>50,766.41</b></u>

**AGENDA ITEM NO. 5c- October 10, 2012  
PENDING APPLICATIONS AS OF September 26, 2012**

		LAFCO Designation	Applicant	Description	Status	Date Filed	Est. Date of Completion
1	DD	Annexation No. 2007-04 City of Industry	City of Industry	Annexation of 14.8 acres to the City of Industry. The subject territory consists principally of a street right-of-way along Valley Blvd., between Morningside Drive and the City of Industry and City of Pomona boundary line.	The City and County have been in involved in ongoing negotiations. There has been no agreement to date. 7-29-12 Troy Helling indicated the City Engineer wants to move forward.	1/4/2007	Unknown
2	DD	Annexation No. 2007-05 City of Long Beach (Rancho Dominguez)	City of Long Beach	Request for annexation of 880 acres to the City of Long Beach. The proposed area is located in the Rancho Dominguez/Alameda Industrial area, east of Alameda Street, north of Del Amo Blvd., west of the 710 Freeway, and south of the 91 Freeway.	The City and County have been in involved in ongoing negotiations. There has been no agreement to date.	1/10/2007	Unknown
3	AAO	Annex2003-08(40-23/4-103) Los Angeles County Waterworks District No. 40	LA County Waterworks District 40	Annex 19.69 acres of land located at the NE corner of Ave N and 55th St W in the City of Palmdale. 43 single family homes have been constructed.	district been providing service since 2003, Board letter submitted to administration for processing, 7-29-10	11/4/2003	Unknown
4	AAO	Annexation 2006-12 to Los Angeles County Waterworks District No. 40	Land Resource Investors	Annex 20 acres of vacant land located at the northeast corner of Avenue J and 37th Street East, City of Lancaster. Will be developed into 80 single family homes.	never started, sent out paperwork 11-3-09, resent 8-3-10 to waterworks, pending approval of tax resolution, missing will serve letter	5/15/2006	Unknown
5	AAO	Annexation No. 2006-46 to Los Angeles County Waterworks District No. 40	New Anaverde, LLC	Annex 1.567 acres of vacant land located near Lake Elizabeth Road and Avenue S in the city of Palmdale. Will be developed into 313 single family home.	Missing Will Serve Letter, need to talk to district about out of agency service agreement for school 4-27-11, received revised map and legal 2-28-12	10/5/2006	Unknown
6	AAO	Annexation No. 2011-17 (2006-50) to Los Angeles County Waterworks District No. 40	Behrooz Haverim/Kamyar Lashgari	Annex 20.62 acres of vacant land located south of Avenue H between 42nd Street West and 45th Street West in the City of Lancaster. To be developed into single family homes	was an incomplete application till May 2011, informational item in May, sent out in June, waiting for tax resolution. Missing will serve letter	12/1/2006	Unknown
7	AAO	Annexation No. 2007-18 to Los Angeles County Waterworks District No. 40	Michael Roach/ LACWD	Annex 130.29 acres of inhabited located between Avenue K & K-8 and between 30th and 35th Streets East, in the City of Lancaster.	Have tax resolution, missing CEQA and BOE fees, left messages for Mike, district serving area since mid 90's	8/10/2007	Unknown
8	AAO	Annexation No. 2007- 29 to Quartz Hill Water District - SOI amendment	Kimberly Juday	Annex 5.08 acres of vacant land located at NEC of Avenue L-12 & 37th Street West, in the City of Lancaster. Future development of 7 single family homes	Applicant working on CEQA with city, pending approval of tax resolution, in redevelopment area	1/4/2008	Unknown
9	AAO	Annexation 2008-13 to Los Angeles County Waterworks District No. 40	Lancaster School Dist	Annex 20.47 acres of vacant land located 2 miles west of the Antelope Valley fw. And the nearest paved major streets are ave. H. And Ave. I, in the City of Lancaster. For future construction of a school.	Sent out Notice 4-22-09, Pending approval of tax resolution, resent to waterworks 8-3-10	9/22/2008	Unknown

		LAFCO Designation	Applicant	Description	Status	Date Filed	Est. Date of Completion
10	AAO	Annexation No. 2008-09 to Los Angeles County Waterworks District No. 37	Watt Enterprises LTD	Annex 272 Acres vacant land located on Escondido Canyon Road (area B) and Hubbard Road (area A) Angeles Forest Highway and Vincent Road	Waterworks waiting for AVEK to sign tax resolution. 7-29-10	12/5/2008	Unknown
11	AD	Reorganization No. 2011-01 (21-723)	Sanitation Districts	556.712 Acres on Amar Road North of Lemon Avenue and Creekside Drive, all within the City of Walnut.	Pending approval of tax resolution	9/8/2009	Unknown
12	AAO	Reorganization 2009-16 to County Water Works District No. 29	M.H.A.B. Trust/ Water works Dist. 29	Detach 56 acres of uninhabited territory from Las Virgenes Municipal Water District and annex same said territory to Los Angeles County Waterworks District No. 29 and West Basin Municipal Water District. The project includes future construction of 5 homes. The project site is located north of Palm Canyon Lane between Cross Creek Road and Serra Road, in unincorporated county territory, adjacent to Malibu	Sent out Notice 2-11-10, Pending approval of tax resolution, no CEQA	12/28/2009	Unknown
13	AAO	Reorganization 2010-02 Newhall County Water District	Newhall County Water District	Detach 113.8 acres of vacant land from Los Angeles County Waterworks District No. 36 and annex to Newhall County Water District. The site is located on northwest corner of Romero Canyon Road and Canyon Hill Road, within the area know as Castaic.	August 2011 Agenda, continued until new CEQA is submitted	1/21/2010	Unknown
14	AD	Santa Clarita Valley Sanitation District of Los Angeles County Annexation No. 1011	Sanitation Districts	63.941 Acres Parcel 1 located on Sierra Highway at its intersection with Sand Canyon Road; Parcel 2 is located on Vasquez Canyon Road approx. 700 feet northwesterly of its intersection with Sierra Highway, all within the unincorporated area of Los Angeles County.	Protest, October 2012 Agenda	2/4/2010	Oct-2012
15	DD	City of Calabasas Annexation 2010-03 (Mountain View Estates)	City of Calabasas	840 acres located between Ventura County Boundary on the north & the Ventura Freeway (State Route 101) on the south, east of Las Virgenes Rd. & west of the City of Hidden Hills. Major streets & highways are Mureau Rd. & the Ventura Freeway on the south & Thousand Oaks Blvd. which enters the proposal area from the west.	Pending approval of tax resolution	3/22/2010	Jan-2012
16							
17	AD	Annexation 369 District No. 14	Sanitation Districts	50.060 acres located on Avenue J between 60th Street West and 65th Street West, all within the City of Lancaster	Pending approval of tax resolution	5/13/2010	Unknown
18	AD	Annexation 718 District No. 21	Sanitation Districts	4.417 acres located on Los Altos Drive approx. 900 ft southwest from its intersection w/ Turnbull Canyon Rd, all w/in the unincorporated area of L.A. County.	Protest, October 2012 Agenda	5/25/2010	Oct-2012
19	AD	Santa Clarita Valley Sanitation District of Los Angeles County Annexation No. 1016	Sanitation Districts	10.141 acres located on Sierra Highway approx. 1900 ft north of Soledad Canyon Road, all within the City of Santa Clarita.	Protest, October 2012 Agenda	5/25/2010	Oct-2012
20	AAO	Reorganization 2010-04 Los Angeles County Waterworks District No. 29	Malitex Partners, LLC	Detach 88 acres of vacant land from the Las Virgenes Municipal Water District and annex same said territory to Los Angeles County Waterworks District No 29 and West Basin Municipal Water District. The project includes future construction of three homes and dedicates open space. The project site is located north of Pacific Coast Highway at the end of Murphy Way, in the unincorporated area adjacent to Malibu.	received Tax Resolution 12-29-11, no CEQA, talked to Pete 1-5-12 should be receiving something in a month. 3-7-12 will not submit CEQA feel he is exempt	6/9/2010	Unknown
21	AD	Annexation 367 District No. 14	Sanitation Districts	30.140 acres located on Avenue L at its intersection with 55th Street West, all within the City of Lancaster.	Protest, October 2012 Agenda	6/21/2010	Oct-2012
22	AD	Annexation 389 District No. 22	Sanitation Districts	7.380 acres located on Arrow Highway approx. 250 feet west of Walnut Avenue, all within the City of San Dimas.	Pending approval of tax resolution	7/12/2010	Unknown

		LAFCO Designation	Applicant	Description	Status	Date Filed	Est. Date of Completion
23	AD	Annexation 351 District No. 14	Sanitation Districts	30.762 acres located at the northeast corner of 40th Street East and Avenue J, all within the City of Lancaster.	Pending approval of tax resolution	7/26/2010	Unknown
24	AD	Santa Clarita Valley Sanitation District of Los Angeles County Annexation No. 1017	Sanitation Districts	4.049 acres located approx 500 feet northwest from its intersection of Via Princessa and Sierra Highway, all within the City of Santa Clarita.	Pending approval of tax resolution	8/9/2010	Unknown
25	AD	Annexation 719 District No. 21	Sanitation Districts	5.767 acres located on the southeast corner of Base Line Road and Emerald Avenue, all within the City of La Verne.	Pending approval of tax resolution	8/9/2010	Unknown
26	AD	Annexation 355 District No. 14	Sanitation Districts	20.338 acres located at the northwest corner of Lancaster Blvd. and 30th Street West, all within the City of Lancaster.	Pending approval of tax resolution	8/18/2010	Unknown
27	AD	Annexation 408 District No. 14	Sanitation Districts	5.0 acres located on Columbia Way between 67th Street West and 70th Street West, all within unincorporated area of Los Angeles County.	Protest, October 2012 Agenda	8/18/2010	Oct-2012
28	AD	Annexation 393 District No. 22	Sanitation Districts	4.634 acres located at the northwest intersection of Cortez Street and Grand Avenue, all within the City of West Covina.	Pending approval of tax resolution	10/4/2010	Unknown
29	AAO	Quartz Hill Water District Annexation 2010-09	Antelope Valley Sikh Center	4.89 acres located on the west side of 30th Street West, midway between Avenue M and Avenue L-8	Pending approval of tax resolution, in redevelopment area	10/13/2010	Unknown
30	DD	City of Palmdale Annexation 2010-05	City of Palmdale	49.6 acres located adjacent to residential properties to the southwest, southeast, and separated by the Amargosa Creek to the north.	Pending approval of tax resolution	10/25/2010	Unknown
31	AD	Annexation 28 District No. 5	Sanitation Districts	2.430 acres parcel 1 is located approx. 100 feet north of Angeles Crest Highway and approx 100 feet west of Harter Lane; Parcel 2 is located east of Starlight Crest Drive at its intersection with Stardust Road, all within the City of La Canada Flintridge.	Pending approval of tax resolution	11/10/2010	Unknown
32	AD	Annexation 726 District No. 21	Sanitation Districts	Parcel 1 is located between the Pomona (60) Freeway and Valley Blvd. northeast and southwest of Grand Avenue, all within the City of Industry; Parcel 2 is located immediately west of Orange (57) Freeway, all within the City of Diamond Bar; Parcel 3 is located on Valley Blvd. at its intersection with Grand Avenue, all within the City of Walnut, and Parcel 4 is located on Brea Canyon Road at its intersection with Glenbrook Drive, all within the City of Diamond Bar.	Pending approval of tax resolution	11/22/2010	Unknown
33	AD	SOI Amendment 2010-11 District No. 5	Sanitation Districts	Proposal 1 is located in the City of El Segundo and is bounded by El Segundo Blvd. to the north, Rosecrans Ave. to the south, Douglas St. to the east, and Sepulveda to the west.	Pending approval of tax resolution	11/29/2010	Unknown
34	AD	Santa Clarita Valley Sanitation District of Los Angeles County Annexation No. 1012	Sanitation Districts	22.319 acres located at the northwest intersection of Golden Valley Road and Sierra Highway, all within the City of Santa Clarita	Pending approval of tax resolution	12/21/2010	Unknown
35	AD	Santa Clarita Valley Sanitation District of Los Angeles County Annexation No. 1023	Sanitation Districts	4.015 acres located on Parker Road west of the Golden State Freeway (I-5) and east of The Old Road, all within the unincorporated area of Los Angeles County.	Pending approval of tax resolution	12/21/2010	Unknown
36	AD	Annexation 55 District No. 5	Sanitation Districts	17.999 acres located on Sepulveda Blvd. approx. 300 feet south of Hughes Way, all within the City of El Segundo.	Pending approval of tax resolution	3/2/2011	Unknown
37	AD	Annexation 367 District No. 22	Sanitation Districts	0.556 acres located on Prospero Drive approx 300 feet north of Cameron Ave, all within the City of West Covina.	Pending approval of tax resolution	3/9/2011	Unknown
38	AD	Annexation 288 District No. 15	Sanitation Districts	.522 acres located on Sierra Vista Court, approx 300 feet west of Del Valle Avenue, all within the City of La Puente.	Pending approval of tax resolution	3/9/2011	Unknown
39	DD	City of Palmdale Annexation 2011-07 (2008-02)	City of Palmdale	20 acres of uninhabited land east of 11th Street West, between Avenue O-4 and Avenue N-12, in the unincorporated area adjacent to the City of Palmdale.	Pending approval of tax resolution. County want city to annex entire island, landowner not interested	4/13/2011	Unknown

		LAFCO Designation	Applicant	Description	Status	Date Filed	Est. Date of Completion
40	AD	Santa Clarita Valley Sanitation District of Los Angeles County Annexation No. 1049	Sanitation Districts	116.678 acres located at the Northwest terminus of Witherspoon Parkway approx. 500 feet east of Del Valle Road, all within Unincorporated Los Angeles County.	Pending approval of tax resolution	3/23/2001	Unknown
41	AAO	Reorganization 2011-16 to Newhall County Water District and Castaic Lake Water Agency	NCWD/CLWA	801.53 acres regional access is provided via Interstate 5 (I-5) for north/south travelers from the east, and State Route 126 (SR-126) for travelers from the west. The existing local thoroughfare that provides access to the proposed area is Copper Hill Drive, which can be accessed directly from Tesoro del Valle Drive or Avenida Rancho Tesoro.	Pending approval of tax resolution, worksheets in CEO's office 10-31-11	5/5/2011	Unknown
42	AAO	Newhall County Water District Annexation 2011-15	Newhall County Water District	411.91 acres regional access is provided via Interstate 5 (I-5) for north/south travelers, State Route 14 (SR-14) for travelers from the east, and State Route 126 (SR-126) for travelers from the west. The existing local thoroughfare that provides access to the proposed area, which can be accessed directly from Tesoro del Valle Drive or Avenida Rancho Tesoro	Pending approval of tax resolution, worksheets in CEO's office 10-31-11	5/5/2011	Unknown
43	AD	Santa Clarita Valley Sanitation District of Los Angeles County Annexation No. 1020	Sanitation Districts	.925 acres located on Scherzinger Lane approximately 100 feet southwest of Adon Avenue, all within the City of Santa Clarita.	Pending approval of tax resolution	5/18/2011	Unknown
44	AD	Annexation 413 District No. 14	Sanitation Districts	11.979 acres located on Fern Ave at its intersection with Jackman Street, all within the City of Lancaster.	Pending approval of tax resolution	6/7/2011	Unknown
45	AD	Annexation 405 District No. 14	Sanitation Districts	6.052 acres located on 10th Street West at its intersection with Avenue M-12, all within the City of Palmdale.	Pending approval of tax resolution	7/5/2011	Unknown
46	AD	Annexation 731 District No. 21	Sanitation Districts	.584 acres located on Realitos Dr. immediately north of the Foothill Fwy (Route 210) & approx. 300ft south of SmokeTree Drive, all within unincorporated Los Angeles County.	Pending approval of tax resolution	7/5/2011	Unknown
47	AD	Reorganization No. 2000-01 (21-684)	Sanitation Districts	5.741 acres located on Woodgate Drive approximately 600 feet south of Amar Road, all within the City of West Covina.	Pending approval of tax resolution	7/18/2011	Unknown
48	AD	Reorganization No. 2006-01 (21-6)	Sanitation Districts	2.580 acres located on Oak Grove Drive south of Berkshire Place and east of the Foothill Freeway (I-210), all within the City of La Canada Flintridge.	Pending approval of tax resolution	7/25/2011	Unknown
49	AD	Annexation 725 District No. 21	Sanitation Districts	18.964 acres located on Manzanita Circle approx. 600 ft north of Virginia Ave, all within the City of La Verne.	Pending approval of tax resolution	8/17/2011	Unknown
50	AD	Reorganization No. 2007-02 (15-289)	Sanitation Districts	15.146 acres located east of Azusa Ave between Fairgrove Ave and Aroma Drive, all within the City of West Covina	Pending approval of tax resolution	8/29/2011	Unknown
51	AD	Annexation 412 District No. 14	Sanitation Districts	1.304 acres located on 50th Street West approx. 150 feet south of Columbia Way, all within unincorporated Los Angeles County.	Pending approval of tax resolution	9/7/2011	Unknown
52	DD	City of Santa Clarita Annexation 2011-23 (Norland Road)	City of Santa Clarita	187 acres located south of State Rte 14, north and west of the existing Sand Canuon Community of the City of Santa Clarita.	Pending approval of tax resolution	9/19/2011	Unknown
53	AD	Santa Clarita Valley Sanitation District of Los Angeles County Annexation No. 1054	Sanitation Districts	7.671 acres located on Sierra Highway approx. 600 feet northeast of San Fernando Road all within the City of Santa Clarita.	Pending approval of tax resolution	9/26/2011	Unknown
54	AD	Santa Clarita Valley Sanitation District of Los Angeles County Annexation No. 313	Sanitation Districts	.503 acres located on Sierra Highway approx. 200 feet northeast of Sierra Cross Avenue, all within the City of Santa Clarita.	Pending approval of tax resolution	9/26/2011	Unknown
55	AD	Santa Clarita Valley Sanitation District of Los Angeles County Annexation No. 1057	Sanitation Districts	13.584 acres located on Scherzinger Lane approx. a mile northeast from its intersection with Soledad Canyon Road, all within the City of Santa Clarita.	Pending approval of tax resolution	9/26/2011	Unknown
56	AD	Annexation 275 District No. 15	Sanitation Districts	.950 acres Parcel 1 located on Kwis Ave at its intersection with Three Palms Street; Parcel 2 is located on Kwis Avenue approximately 300 feet north of Los Robles Avenue and Parcel 3 is located on Los Robles Ave near its intersection with Kwis Ave, all within the unincorporated area of Los Angeles County.	Pending approval of tax resolution	10/11/11	Unknown

		LAFCO Designation	Applicant	Description	Status	Date Filed	Est. Date of Completion
57	DD	City of Santa Clarita Annexation 2011-22 North Copperhill	City of Santa Clarita	2,475 acres located east of San Francisco Canyon Road, south of the Angeles National Forest boundary, north of the existing City of Santa Clarita corporate limit and west of Bouquet Canyon Road. The annexation area also includes an area generally south of Bouquet Canyon Road, east of the existing City limits, north of Plum Canyon Road and west of Santa Catarina Drive, inclusive of the residences on the east side of the street. Plum Canyon Road provides a boundary for that portion of the annexation area that is located in the vicinity of Plum Canyon.	on august agend, continued to october meeting, trying to get greater la vector control district added.	10/27/2011	Nov-2012
58	DD	City of Los Angeles Annexation 2011-27	Forestar Group	685 acres of uninhabited territory located east of Browns Canyon Road and northwest of Mason Ave, in the unincorporated area just north of the City of Los Angeles.	Received incomplete application 12-8-11, received more 2-13-12, sent out notice 2-15-12, City of LA is working on CEQA.	12/8/2011	Unknown
59	AD	Santa Clarita Valley Sanitation District of Los Angeles County Annexation No. 1055	Sanitation Districts	0.294 Acres located of Scherzinger Lane approximately 200 feet north of Sierra Cross Avenue, all within the City of Santa Clarita.	Pending approval of tax resolution	12/6/2011	Unknown
60	AD	Annexation 413 District No. 22	Sanitation Districts	0.690 Acres located on Sierra Madre Avenue at its intersection with Easley Canyon Road, all within the City of Glendora.	Pending approval of tax resolution	12/6/2011	Unknown
61	AD	Annexation 412 District No. 22	Sanitation Districts	1.069 Acres located on Base Line Road approximately 200 feet north of Foothill Boulevard, all within the City of La Verne.	Pending approval of tax resolution	12/6/2011	Unknown
62	AD	Annexation 410 District No. 22	Sanitation Districts	4.720 Acres Parcel 1, is located approx. 700 ft Southeast from intersection of Arrow Hwy. & Cataract Ave; Parcel 2 is located on Arrow Hwy. approx. 60 feet east of Cataract Avenue, all within the City of San Dimas.	Pending approval of tax resolution	12/6/2011	Unknown
63	AD	Annexation 735 District No. 21	Sanitation Districts	1.451 Acres located on Indian Creek Road at its intersection with Falcons View Drive, all within the City of Diamond Bar.	Pending approval of tax resolution	12/6/2011	Unknown
64	AD	Annexation 730 District No. 21	Sanitation Districts	2.784 Acres located on Alamosa Drive at its intersection with Mills Avenue, all within the City of Claremont.	Pending approval of tax resolution	12/6/2011	Unknown
65	AD	Annexation 411 District No. 14	Sanitation Districts	27.498 Acres located on the northwest corner of Avenue N-8 and 50th Street West, all within the City of Palmdale.	Pending approval of tax resolution	12/6/2011	Unknown
66	AD	Santa Clarita Valley Sanitation District of Los Angeles County Annexation No. 1056	Sanitation Districts	4.162 Acres located on Placerita Canyon Road between Aden Avenue and Cast Avenue, all within the City of Santa Clarita.	Pending approval of tax resolution	12/6/2011	Unknown
67	DD	City of Santa Clarita Annexation 2011-26 (South Sand Canyon)	City of Santa Clarita	692 acres located south of Placerita Canyon Rd., and west and south of Sand Canyon Rd.	New application.	12/14/2011	Unknown
68	DD	City of Glendora Annexation 2011-08	City of Glendora	68 acres located south of Sierra Madre Blvd., east of the City of Azusa limits, west of Barranca Ave., and north of the BNSF Railroad.	9-26-12 city will be revising application soon	12/22/2011	Unknown
69	DD	City of Carson Annexation 2011-25 (Rancho Dominguez)	City of Carson	1,710 acres located south of the 91 Freeway, west of the 710 Freeway, north of Del Amo Blvd., and east of Wilmington Ave.	New application.	12/27/2011	Unknown
70	AD	Annexation 56 District No. 2	Sanitation Districts	1.520 acres located at Ferina Street, approximately 350 feet east of Studebaker Road, all within the City of Norwalk.	Pending approval of tax resolution	1/3/2012	Unknown
71	AD	Annexation 703 District No. 21	Sanitation Districts	3.714 acres located on Puddingstone Drive approximately 200 feet east of Raging Waters Drive, all within the City of San Dimas.	Pending approval of tax resolution	1/3/2012	Unknown
72	AD	Annexation 713 District No. 21	Sanitation Districts	1.291 acres located on Puddingstone Drive approximately 800 feet west of Walnut Avenue, all within the City of San Dimas.	Pending approval of tax resolution	1/3/2012	Unknown
73	AD	Annexation 378 District No. 22	Sanitation Districts	1.942 acres on Cannon Avenue approximately 200 feet north of Rebecca Drive, all within the City of San Dimas.	Pending approval of tax resolution	1/3/2012	Unknown

		LAFCO Designation	Applicant	Description	Status	Date Filed	Est. Date of Completion
74	AD	Santa Clarita Valley Sanitation District of Los Angeles County Annexation No. 1059	Sanitation Districts	802.540 acres located approximately 3,900 feet north of Soledad Canyon Road and directly west of Sierra Highway, within unincorporated Los Angeles County and the City of Santa Clarita.	Pending approval of tax resolution	1/24/2012	Unknown
75	AD	Annexation 414 District No. 22	Sanitation Districts	0.570 acres located on the northwest corner of Aldersgate Drive and Wheeler Avenue, all within the City of La Verne.	Pending approval of tax resolution	2/6/2012	Unknown
76	AD	Annexation 28 District No. 16	Sanitation Districts	1.680 acres located at the terminus of Trevan Road approximately 200 feet south of Villa Knolls Drive, all within unincorporated Los Angeles County.	Pending approval of tax resolution	2/6/2012	Unknown
77	AD	Annexation 291 District No. 15	Sanitation Districts	6.782 acres located on Ringrove Drive and the terminus of Galecrest Avenue, all within unincorporated Los Angeles County.	Pending approval of tax resolution	3/19/2012	Unknown
78	AD	Annexation 52 District No. 18	Sanitation Districts	6.699 acres located on Pellissier Road approximately 200 feet west of Pearson Avenue, all within unincorporated Los Angeles.	Pending approval of tax resolution	3/19/2012	Unknown
79	DD	City of Palmdale Annexation 2011-19	City of Palmdale	405 acres of uninhabited territory located between Palmdale Blvd and Ave S and 80th and 85th Street East.	Sent out Notice 3-22-12, pending approval of tax resolution.	3/8/2012	Unknown
80	AD	Annexation 706 District No. 21	Sanitation Districts	0.779 acres located on Foothill Boulevard approximately 200 feet north of Towne Center Drive, all within the City of La Verne.	Pending approval of tax resolution	4/16/2012	unknown
81	AD	Annexation 55 District No. 2	Sanitation Districts	1.108 acres located at the southeast corner of the intersection of Noakes Street and Indiana Street, all within the City of Los Angeles.	Pending approval of tax resolution	4/16/2012	unknown
82	AD	Annexation 733 District No. 21	Sanitation Districts	1.195 acres located on Towne Avenue approximately 150 feet south of Hillisdale Drive, all within the City of Claremont.	Pending approval of tax resolution	4/16/2012	unknown
83	AD	Annexation 416 District No. 22	Sanitation Districts	1.390 acres located on De Anza Heights Drive approximately 700 feet east of Walnut Avenue, all within the City of San Dimas.	Pending approval of tax resolution	4/16/2012	unknown
84	AD	Annexation 292 District No. 15	Sanitation Districts	2.926 acres located on Hacienda Boulevard approximately 150 feet southeast of Sandy Hook Avenue, all within the City of La Puente.	Pending approval of tax resolution	4/16/2012	unknown
85	AAO	Annexation 2012-04 to Los Angeles County Waterworks District No. 40	Palmdale School District	20 acres of uninhabited land north of Avenue P-8 between 22nd and 23rd Street West, in the City of Palmdale.	Sent out Notice May 3, 2012	4/17/2012	Unknown
86	AAO	Detachment 2012-03 from Los Angeles County Waterworks District No. 36	Sterling Gateway, LP	116 acres of uninhabited land east of the intersection of Avenue Penn and Witherspoon Parkway.	Sent out Notice May 3, 2012	4/17/2012	Unknown
87	AAO	Annexation 2012-06 to Mesa Heights Garbage Disposal District	Department of Public Works	88.13 acres located south of Stocker Street, west of Crenshaw Blvd., east of Culver City Blvd., and north of Jefferson Blvd and Centinela Avenue.	Pending approval of tax resolution	5/3/2012	Unknown
88	AD	Annexation 29 District No. 16	Sanitation Districts	14.765 acres located on Gainsborough Drive at its intersection with El Campo Drive, all within unincorporated Los Angeles County.	Pending approval of tax resolution	5/7/2012	Unknown
89	AAO	Annexation 375 District No. 14	Sanitation Districts	129.557 acres located on Joshua Ranch Rd approximately 300 feet north of Elizabeth Lake Road, all within the City of Palmdale	Pending approval of tax resolution	6/7/2012	Unknown
90	AD	Annexation 82 District No. 20	Sanitation Districts	240.860 acres located at the Southwest corner of Avenue S and 70th Street East, all within the City of Palmdale	Pending approval of tax resolution	6/7/2012	Unknown
91	AD	Annexation 89 District No. 20	Sanitation Districts	6.287 acres: Joshua Ranch Road which serves as the access road to the Joshua Ranch development, located within the City of Palmdale	Pending approval of tax resolution	6/7/2012	Unknown
92	AAO	Annexation 323 District No. 14	Sanitation Districts	201.062 acres located on Elizabeth Lake Road approximately 3 3/4 miles west of the Antelope Valley Freeway, all within the City of Palmdale	Pending approval of tax resolution	6/7/2012	Unknown

		LAFCO Designation	Applicant	Description	Status	Date Filed	Est. Date of Completion
93	AD	Annexation 398 District No. 14	Sanitation Districts	2.531 acres located on 10th Street West approximately 500 feet north of Avenue O all within unincorporated Los Angeles County	Pending approval of tax resolution	6/7/2012	Unknown
94	AAO	SOI Amendment 2012-14 District No. 14 (assoc. annexations 14-323 & 14-375)	Sanitation Districts	899.77 acres located north of the intersection of Elizabeth Lake Road and Ranch Center Drive and southwest of the California Aqueduct, all within the City of Palmdale	Pending approval of tax resolution	6/7/2012	Unknown
95	AD	SOI Amendment 2012-15 District No. 20 (assoc. annexation 20-89)	Sanitation Districts	438.64 acres located north of the intersection of Elizabeth Lake Road and Ranch Center Drive and southwest of the California Aqueduct, all within the City of Palmdale	Pending approval of tax resolution	6/7/2012	Unknown
96	AD	Santa Clarita Valley Sanitation District of Los Angeles County Annexation No. ASCV-1026	Sanitation Districts	70.876 acres located on Sierra Hwy approx 3,000 feet NW of the intersection of Soledad Canyon Road and Sand Canyon Road, within the City of Santa Clarita	Pending approval of tax resolution	6/25/2012	Unknown
97	AD	Santa Clarita Valley Sanitation District of Los Angeles County Annexation No. ASCV-1060	Sanitation Districts	2905 acres located on Sierra Hwy between Raquet Club Court & Dolan Way, within the City of Santa Clarita	Pending approval of tax resolution	6/26/2012	Unknown
98	AD	Santa Clarita Valley Sanitation District of Los Angeles County Annexation No. ASCV-1061	Sanitation Districts	1,621 Acres located on Newhall Ave approx 600 feet NW of Meadow Ridge Drive, within the City of Santa Clarita	Pending approval of tax resolution	6/26/2012	Unknown

## **Staff Report**

**October 10, 2012**

### **Agenda Item No. 6.a.**

#### **Annexation No. 2011-22 to the City of Santa Clarita (North Copperhill)**

This is a proposal requesting annexation of approximately 2,473 acres of inhabited territory to the City of Santa Clarita. The applicant of record is the City of Santa Clarita, having initiated the request through the adoption of a resolution of application, Resolution No. 11-73, on August 23, 2011.

**Related Jurisdictional Changes:** The related jurisdictional changes as a result of this request include: detachment from County Lighting and Maintenance District 1687 and withdrawal from the County Public Library, County Road District No. 5, and County Lighting District LLA-1, Unincorporated Zone, and annexation of the northerly 1295 acres of the 2473 acres to Greater Los Angeles County Vector Control District.

**Background:** The proposed annexation consists of established neighborhoods and undeveloped land. There are 3,181 homes, a shopping center, three County parks, three elementary schools, two County probation camps, and publicly-owned open space.

**Purpose of the Request:** The City of Santa Clarita previously conducted an annexation survey of the affected territory. The City states that approximately 87% of the residents were in support to the annexation to the city. The property owners cite that the quality of services provided by the City and the desire for local government representation are the reason for the annexation. The City supports the annexation proposal to promote sound planning and orderly growth, and to prove a logical extension of the City's physical boundaries and urban service area. Annexation would allow residents to vote in City elections and fully participate in municipal activities.

**Location:** The affected territory is generally located East of San Francisquito Canyon Road, south of the Angeles National Forest boundary, north of the City of Santa Clarita boundary limit, and west of Bouquet Canyon Road.

#### **Factors For Consideration Pursuant to Government Code Section 56668:**

- 1. Population and Growth:*** The affected territory has approximately 9,543 residents. Three tract maps have been tentatively approved by the County, which would add another 132 homes to the area.
- 2. Registered Voters/Landowners:*** As of November 29, 2011, the County Registrar Recorder - County Clerk certified that there were 6,028 registered voters residing within the affected territory. There are 3,285 landowners.

3. ***Topography:*** The topography of the affected territory is a mixture of hills and canyons. The drainages include Seco Canyon, Haskell Canyon, and Plum Canyon.
4. ***Zoning, Present and Future Land Use:*** The affected territory consists of developed and vacant land. The current land use designations are: HM, N2, O-P, P, U1, U2, U3, and W. The current zoning designations are: A-A-1, A-A-1 DP, A-2-1, A-2-2, C-2 DP, R-1-500, R-1-7000, R-1-10000 DP, RPD-1-3.0U, RPD-50003.5U, RPD-5000-4U, RPD-5000-4.5U, RPD-6000-4U, RPD-6000-5.9U, and RPD-10000-1.9U. The current land use will continue without change.
5. ***Surrounding Land Use:*** Land use north of the subject territory is national forest, east is rural agricultural, south is developed residential, and west is rural residential.
6. ***Pre-zoning and Conformance with the General Plan:*** Pursuant to the requirements of Government Code Section 56375(a)(7), Pre-Zoning Ordinance No. 11-15, was adopted by the Santa Clarita City Council on October 5, 2011. The pre-zoning designation of the affected territory is in conformance with the City of Santa Clarita General Plan.
7. ***Regional Transportation and General Plan Consistency:*** The proposal is not expected to have any effect on the Regional Transportation Plan. With regards to the requirements of Government Code Section 65080, the affected territory is consistent with the *City of Santa Clarita General Plan*.
8. ***Assessed Value, Tax Transfer:*** The total assessed value of land for Assessor roll year 2011 is \$449,633,438. The per capita valuation is estimated at \$47,117. All agencies have adopted a property tax transfer resolution.
9. ***Governmental Services and Control, Availability and Adequacy:*** Government Code Section 56668(b) states that the Commission is to consider, “the need for organized community services: the present cost and adequacy of governmental services and controls in the area; probable future needs for those service and controls; probable effect of the...annexation... and of alternative courses of action on the cost and adequacy of services and controls in the area and adjacent areas.”

Municipal Service	Current Service Provider	Proposed Service Provider
Animal Control	County	Same
Fire and Emergency Medical	Consolidated Fire Protection Dist.	Same
Flood Control	County	Same
Library	County Library	City of Santa Clarita
Park and Recreation	County	City of Santa Clarita
Planning	County	City of Santa Clarita
Police	County Sheriff	Same- under contract with County Sheriff
Road Maintenance	County	City of Santa Clarita
Solid Waste	County-Private hauler	City of Santa Clarita-Private hauler
Street Lighting	County	City of Santa Clarita
Water	Newhall County Water District, Santa Clarita Water Division, and Valencia Water Company	Same
Wastewater	Santa Clarita Valley Sanitation District	Same

The County will continue to provide animal control and flood control to the annexation area. Upon approval of the annexation request, the City of Santa Clarita will provide library services, park and recreation, planning, road maintenance, and street lighting services. The City will continue to provide adequate services and maintain current service levels. Enhanced service levels will be financed through city general fund revenues or developer fees.

There are no changes in fire and emergency medical, police, water, and wastewater service providers and in levels of service. Solid waste service is currently provided by the County through contract with a private hauler; upon approval of the annexation the City of Santa Clarita will provide service through contract with a private hauler. No change in service level is anticipated.

The County manages several special assessment districts within the proposed annexation area, including County Road Maintenance District No. 5, County Public Library, County Lighting and Maintenance District 1687, and County Lighting District LLA-1, Unincorporated Zone. As part of this annexation request, the affected territory will be detached from there special assessment districts and the City of Santa Clarita will assume responsibility for funding and providing the services. The following special district assessments would be applied upon annexation: Open Space Preservation District - \$29 per single-family residence per year, Stormwater Facility Maintenance District- \$23 per single-family residence per year, Landscape Maintenance District \$60 per single-family residence per year, and Street Light Maintenance District - \$73 per single-family residence per year.

There are no alternative courses of action, other than having the territory remain unincorporated with the County continuing to provide municipal services.

- 10. Effects on Agricultural and Open-Space Lands:** There will be no adverse effect to agricultural or open-space lands as a result of approval of this annexation request. The affected territory involves residential and vacant land that is not used for agricultural purposes, and does not change any open-space designations.
- 11. Boundaries and Lines of Assessment:** The boundaries of this territory have been clearly defined and correspond to lines of assessment or ownership. This proposal does not create any new islands of unincorporated territory.
- 12. Effects of the Proposal on Adjacent Areas and the County:** The proposal will have no adverse effect on adjacent areas, or mutual social and economic interests, or on the local governmental structure of the County. The alternative action would be that the proposed annexation area would remain within the jurisdiction of the County, thereby maintaining the current status.
- 13. Conformity with Policies on Planned and Orderly Growth:** Staff finds that the annexation proposal is in conformance with the County and City's policies on planned and orderly growth.
- 14. Sphere of Influence:** The proposed annexation area is within the City's Sphere of Influence.
- 15. Timely Availability of Water Supplies:** The affected territory is within Newhall County Water District, Santa Clarita Water Division, and Valencia Water Company Littlerock Creek Irrigation District. There is no change in water service.
- 16. Regional Housing Needs:** The proposed annexation has no impact on the achievement of a fair share of regional housing needs of the City or County. The County and City have agreed to a Regional Housing Needs Assessment (RHNA) allocation transfer of 31 very low income, 20 low income, 21 moderate income, and 52 above moderate income units from the County to the City.
- 17. Environmental Justice:** The proposal will have no adverse effect with respect to the fair treatment of people of all races and income, or the location of public facilities or services.
- There are no disadvantaged unincorporated communities in the vicinity of the affected territory.
- 18. Comments from Affected Agencies:** LAFCO received comments from all the affected agencies with regards to this proposal. No significant issues were noted.

**19. Correspondence:** No correspondence was received either in support of or in opposition to the annexation request.

**20. CEQA:** The Negative Declaration adopted by the City of Santa Clarita on August 23, 2011 is adequate for consideration of this proposal.

**Conclusion:** Staff recommends approval of this annexation request. The annexation is a logical and reasonable extension of the City of Santa Clarita boundary.

**Recommended Action:**

1. Open the public hearing and receive testimony on the matter.
2. There being no further testimony, close the public hearing.
3. Adopt the Resolution Making Determinations Approving “Annexation 2011-22 to the City of Santa Clarita (North Copperhill)”.
4. Pursuant to Government Code Section 57002, set November 14, 2012 at 9:00 a.m., as the date for Commissions protest proceedings.

**RESOLUTION NO. 2012-00 RMD**  
**RESOLUTION OF THE LOCAL AGENCY FORMATION**  
**COMMISSION FOR THE COUNTY OF LOS ANGELES**  
**MAKING DETERMINATIONS APPROVING**  
**"ANNEXATION NO. 2011-22 TO THE CITY OF SANTA CLARITA**  
**(NORTH COPPERHILL)"**

WHEREAS, the City of Santa Clarita (the "City") adopted a resolution of application to initiate proceedings before the Local Agency Formation Commission for Los Angeles County (the "Commission"), pursuant to, Part 3, Division 3, Title 5, of the California Government Code (commencing with section 56000, the Cortese-Knox-Hertzberg Local Government Reorganization Act of 2000), for annexation of territory herein described to the City, and detachment of same said territory from County Road District No. 5 and County Lighting and Maintenance District 1687 and withdrawal from County Lighting District LLA-1, Unincorporated Zone, and annex the northerly 1295 acres of the 2473 acres to Greater Los Angeles County Vector Control District, all within the County of Los Angeles (County); and

WHEREAS, the proposed annexation consists of approximately 2473 acres of inhabited territory and is assigned the following distinctive short form designation: "Annexation No. 2011-22 to the City of Santa Clarita (North Copperhill)"; and

WHEREAS, a description of the boundaries and map of the proposal are set forth in Exhibits "A" and "B", attached hereto and by this reference incorporated herein; and

WHEREAS, the principal reason for this annexation is that the City reports that a majority of residents within the affected territory desire the services provided by the City and local government representation. The City supports the annexation proposal to promote sound planning and orderly growth, and to provide a logical extension of the City's physical boundaries and urban service area; and

WHEREAS, the Executive Officer has reviewed the proposal and submitted to the Commission a report, including his recommendations therein; and

WHEREAS, on October 10, 2012, after being duly and properly noticed, this proposal came on for hearing at which time this Commission heard and received all oral and written testimony, objections and evidence which were made, presented or filed, and all persons present were given an opportunity to hear and be heard with respect to this proposal and the report of the Executive Officer.

NOW, THEREFORE, BE IT RESOLVED as follows:

1. The Commission, acting in its role as a responsible agency with respect to Annexation No. 2011-22 pursuant to California Environmental Quality Act (CEQA) Guidelines Section 15096, certifies that it has independently considered and reached its own conclusions regarding the environmental effects of the proposed project and the Negative Declaration adopted by the City, as lead agency, and has determined that the document adequately addresses the environmental impacts of the proposed project. The Commission finds that it has complied with the requirements of CEQA with respect to the process for a responsible agency, and hereby adopts by reference the environmental findings previously adopted by the lead agency in connection with its approval of the project.
2. A description of the boundaries and map of the proposal, as approved by this Commission, are set forth in Exhibits "A" and "B", attached hereto and by this reference incorporated herein.

3. The affected territory consists of 2473 acres, is inhabited, and is assigned the following short form designation:

"Annexation No. 2011-22 to the City of Santa Clarita (North Copperhill)"

4. Annexation No. 2011-22 to the City of Santa Clarita (North Copperhill) is hereby approved, subject to the following terms and conditions:
  - a. Annexation of the affected territory described in Exhibits "A" and "B" to the City.
  - b. Detachment of the affected territory from County Road Maintenance District No. 5.
  - c. Withdrawal of affected territory from County Lighting and Maintenance District 1687.
  - d. Withdrawal of affected territory from the County Public Library System.
  - e. Exclusion of affected territory from County Lighting District LLA-1, Unincorporated Zone.
  - f. Annexation of the northerly 1295 acres of the 2473 acres to Greater Los Angeles County Vector Control District.
  - g. Payment of Registrar Recorder/County Clerk and State Board of Equalization fees.

- h. Upon the effective date of the annexation, all right, title, and interest of the County, including but not limited to, the underlying fee title or easement where owned by the County, in any and all sidewalks, trails, landscaped areas, street lights, property acquired and held for future road purposes, open space, signals, storm drains, storm drain catch basins, local sanitary sewer lines, sewer pump stations and force mains, water quality treatment basins and/or structures, and water quality treatment systems serving roadways and bridges shall vest in the City.
- h. Upon the effective date of the annexation, the City shall be the owner of, and responsible for, the operation, maintenance, and repair of all of the following property owned by the County: public roads, adjacent slopes appurtenant to the roads, street lights, traffic signals, mitigation sites that have not been accepted by regulatory agencies but exist or are located in public right-of-way and were constructed or installed as part of a road construction project within the annexed area, storm drains and storm drain catch basins within street right-of-way and appurtenant slopes, medians and adjacent property.

- i. Upon the effective date of the annexation, the City shall do the following: (1) assume ownership and maintenance responsibilities for all drainage devices, storm drains and culverts, storm drain catch basins, appurtenant facilities (except regional Los Angeles County Flood Control District (LACFCD) facilities for which LACFCD has a recorded fee or easement interest and which have been accepted into the LACFCD system), site drainage, and all master plan storm drain facilities that are within the annexation area and are currently owned, operated and maintained by the County ; (2) accept and adopt the County of Los Angeles Master Plan of Drainage (MPD), if any, which is in effect for the annexation area. Los Angeles County Public Works Department (LACPW) should be contacted to provide any MPD which may be in effect for the annexation area. Deviations from the MPD shall be submitted to the Chief Engineer of LACFCD/Director of LACPW for review to ensure that such deviations will not result in diversions between watersheds and/or will not result in adverse impacts to LACFCD's flood control facilities; (3) administer flood zoning and Federal Emergency Management Agency floodplain regulations within the annexation area; (4) coordinate development within the annexation area that is adjacent to any existing flood control facilities for which LACFCD has a recorded easement or fee interest, by submitting maps and proposals to the Chief Engineer of LACFCD/Director of LACPW, for review and comment.

- j. The City agrees to defend, hold harmless and indemnify LAFCO and/or its agents, officers and employees from any claim, action or proceeding against LAFCO and/or its agents, officers and employees to attack, set aside, void or annul the approval of LAFCO concerning this proposal or any action relating to or arising out of such approval.
  - k. The effective date of the annexation shall be the date of recordation.
  - l. The territory so annexed shall be subject to the payment of such service charges, assessments or taxes as may be legally imposed by the City.
  - m. The regular County assessment roll shall be utilized by the City.
  - n. The territory will not be taxed for existing bonded indebtedness of the City.
  - o. Except to the extent in conflict with a through n, above, the general terms and conditions contained in Chapter 2 of Part 5, Division 3, Title 5 of the California Government Code (commencing with Government Code Section 57325) shall apply to this annexation.
5. Pursuant to Government Code Section 57002, the Commission hereby sets the protest hearing for November 14, 2012 at 9:00 a.m. and directs the Executive Officer to give notice thereof pursuant to Government Code Sections 57025 and 57026.
- 6 The Executive Officer is hereby authorized and directed to mail certified copies of this resolution as provided in Government Code Section 56882.

PASSED AND ADOPTED this 10<sup>th</sup> day of October 2012.

MOTION:

SECOND:

AYES:

NOES:

ABSTAIN:

ABSENT:

MOTION PASSES:

**LOCAL AGENCY FORMATION COMMISSION  
FOR THE COUNTY OF LOS ANGELES**

---

**Paul A. Novak, AICP**  
**Executive Officer**



## **Staff Report**

**October 10, 2011**

### **Agenda Item No. 6.b. Reconfirmation of Spheres of Influence**

In fulfilling its basic purpose to plan the future organization of local agencies, Government Code Section (Section) 56076, requires that the Commission adopt a “sphere of influence” for each city and special district. A Sphere of Influence is defined as “a plan for the probable physical boundaries and service area” of each city or special district.

Section 56430 directs LAFCO to prepare Municipal Service Reviews (MSRs) to help inform the Commission’s decisions regarding SOIs.

Section 56425(g) requires that the Commission “shall, as necessary, review and update each sphere of influence” for the cities and special districts. This section of the law, and the corresponding requirement to prepare Municipal Service Reviews (MSRs), came into being with the amendments to the Cortese-Knox-Hertzberg Local Government Reorganization Act (Act) adopted in 2000. The law required that the first “round” of MSRs be prepared prior to January 1, 2008, with future rounds occurring every five years thereafter.

The Commission adopted MSRs for all cities and special districts in Los Angeles County prior to the initial January 1, 2008 deadline (this has come to be known as “Round 1”). The current round, with a deadline of January 1, 2013, is known as “Round 2.” For Round 2, at your March, 2011 meeting, the Commission directed staff to prepare MSRs for 9 cities and 14 special districts. The staff is currently preparing these MSRs, which will come before the Commission in the next few months.

For the remaining cities and special districts in Round 2, in an abundance of caution, and consistent with the every five years “as necessary” language in the Act, staff recommends that the Commission reconfirm the existing Municipal Service Reviews for all but 5 of the agencies as described below.

Staff divided the remaining cities and special districts into two groups based upon whether the SOIs are coterminous with the agency boundaries, or larger than the agency boundaries. The first group of cities and special districts, on today’s Commission agenda, includes 30 cities and 48 special districts which have a “coterminous” SOI (the boundaries of both the city or district and the SOI are the same). At your November 14, 2012 meeting, staff intends to agendize the reconfirmation of SOIs for most of the remaining cities and special districts, those which have SOIs that are larger than their city or district boundaries.

On August 6, 2012, the Executive Officer sent a letter to the city managers (for cities) and general managers (for special districts) informing them that the proposed reconfirmation of their respective SOIs would be on today’s Commission agenda. The letter further requested that

individuals contact the Executive Officer if they had any concerns. As of the preparation of this report, representatives of 8 cities and 6 special districts contacted staff (either in writing or by telephone) inquiring about the reconfirmation of their SOIs. In most instances, once staff had addressed questions about the proposed Commission action, these individuals indicated that their city or district did not object to the proposed reconfirmation of their existing SOI.

Representatives of 2 cities inquired about the potential to increase their SOIs as part of this Commission action. For those cities or districts that may want to increase their SOIs, staff recommended that these agencies may file their applications with LAFCO to do so, and this recommendation and Commission action will not delay the analysis of any such agency request.

Since the adoption of the MSR and SOIs in 2008, the Act was amended in 2011 relative to Disadvantaged Unincorporated Communities (DUCs). DUCs are defined as those unincorporated territories “in which the annual median household income is 80 percent (80%) or less than the statewide median household income.” In determining an SOI, Section 56425(e)(5) requires that LAFCOs consider its potential impacts on DUCs. Staff checked the SOI boundaries for each of the cities and special districts with LAFCO maps of all existing DUCs in Los Angeles County. Based upon this review, staff has concluded that the proposed reconfirmation of SOIs for the 30 cities and 48 special districts herein does not have any potentially adverse impacts on any existing DUCs in all but 5 jurisdictions in the County either because there are no DUCs in or contiguous to these agencies, or because reconfirmation of the SOI is consistent with the present and probable need for the itemized public services to any DUCs. Based upon this analysis, however, staff determined that the reconfirmation of existing SOIs may have the potential to impact DUCs for 1 city and 4 special districts. Accordingly, staff pulled these 5 jurisdictions out of today’s action, to analyze the DUC issue further, and then bring recommendations on those SOI updates to the Commission at a future meeting.

**Recommended Action:**

1. Find that the approval of this Sphere of Influence Update is exempt from CEQA because no change in the existing individual Spheres of Influence is being adopted, and, further, as set forth in State CEQA Guidelines section 15061, it can be seen with certainty that there is no possibility that the Sphere of Influence Update will have a significant effect on the environment;
2. Reconfirm the current Municipal Service Reviews and Spheres of Influence for the following cities: Agoura Hills, Alhambra, Artesia, Bell Gardens, Bellflower, Beverly Hills, Calabasas, Downey, El Monte, El Segundo, Hawaiian Gardens, Hermosa Beach, Lakewood, Lomita, Malibu, Manhattan Beach, Norwalk, Palos Verdes Estates, Paramount, Rancho Palos Verdes, Redondo Beach, Rolling Hills, San Fernando, Santa Monica, Sierra Madre, Signal Hill, South Pasadena, Torrance, West Hollywood, and

Westlake Village;

3. Reconfirm the current Municipal Service Reviews and Spheres of Influence for the following special districts: Los Angeles County Sanitation District No. 4; Los Angeles County Sanitation District No. 9; Los Angeles County Sanitation District No. 19; Los Angeles County Sanitation District No. 27; Los Angeles County Sanitation District No. 29; Newhall Ranch Sanitation District of Los Angeles County; South Bay Cities County Sanitation District; Crescenta Valley Water District; La Habra Heights County Water District; La Puente Valley County Water District; Newhall County Water District; Orchard Dale Water District; Pico Water District; Quartz Hill Water District; San Gabriel County Water District; West Valley Water District; Los Angeles County Waterworks District No. 21, Kagel Canyon; Los Angeles County Waterworks District No. 29, Malibu; Los Angeles County Waterworks District No. 36, Val Verde; Consolidated Fire Protection District of Los Angeles County; Athens-Woodcrest-Olivita Garbage Disposal District; Belvedere Garbage Disposal District; Firestone Garbage Disposal District; Lennox Garbage Disposal District; Mesa Heights Garbage Disposal District; Walnut Park Garbage Disposal District; Kinneloa Irrigation District; La Canada Irrigation District; Palm Ranch Irrigation District; South Montebello Irrigation District; Altadena Library District; Palos Verdes Library District; Compton Creek Mosquito Abatement District; Los Angeles County West Vector & Vector-Borne Control District; San Gabriel Valley Mosquito & Vector Control District; Central Basin Municipal Water District; Foothill Municipal Water District; Golden Valley Municipal Water District; Las Virgenes Municipal Water District; San Gabriel Valley Municipal Water District; Upper San Gabriel Valley Municipal Water District; Three Valleys Municipal Water District; West Basin Municipal Water District; Antelope Valley Resource Conservation District; Resource Conservation District for the Santa Monica Mountains; Antelope Valley-East Kern Water Agency; Castaic Lake Water Agency; and the Water Replenishment District of Southern California;
4. Direct the Executive Officer to add the words "SOI Reconfirmed on October 10, 2012" to the official LAFCO maps for the cities and special districts referenced in Sections 2 and 3, above; and
5. Direct the Executive Officer to mail copies of this resolution as provided in Section 56882 of the Government Code.

**RESOLUTION NO.**

**RESOLUTION OF THE LOCAL AGENCY FORMATION  
COMMISSION FOR THE COUNTY OF LOS ANGELES RECONFIRMING THE  
MUNICIPAL SERVICE REVIEWS (MSRs) AND THE SPHERES OF  
INFLUENCE (SOI's) FOR THE FOLLOWING CITIES AND SPECIAL  
DISTRICTS:**

**CITIES:**

**AGOURA HILLS, ALHAMBRA, ARTESIA, BELL GARDENS, BELLFLOWER,  
BEVERLY HILLS, CALABASAS, DOWNEY, EL MONTE, EL SEGUNDO,  
HAWAIIAN GARDENS, HERMOSA BEACH, LAKEWOOD, LOMITA,  
MALIBU, MANHATTAN BEACH, NORWALK, PALOS VERDES ESTATES,  
PARAMOUNT, RANCHO PALOS VERDES, REDONDO BEACH, ROLLING  
HILLS, SAN FERNANDO, SANTA MONICA, SIERRA MADRE, SIGNAL HILL,  
SOUTH PASADENA, TORRANCE, WEST HOLLYWOOD, AND WESTLAKE  
VILLAGE.**

**SPECIAL DISTRICTS:**

**LOS ANGELES COUNTY SANITATION DISTRICT NO. 4; LOS ANGELES  
COUNTY SANITATION DISTRICT NO. 9; LOS ANGELES COUNTY  
SANITATION DISTRICT NO. 19; LOS ANGELES COUNTY SANITATION  
DISTRICT NO. 27; LOS ANGELES COUNTY SANITATION DISTRICT NO. 29;  
NEWHALL RANCH SANITATION DISTRICT OF LOS ANGELES COUNTY;  
SOUTH BAY CITIES COUNTY SANITATION DISTRICT; CRESCENTA  
VALLEY WATER DISTRICT; LA HABRA HEIGHTS COUNTY WATER  
DISTRICT; LA PUENTE VALLEY COUNTY WATER DISTRICT; NEWHALL  
COUNTY WATER DISTRICT; ORCHARD DALE WATER DISTRICT; PICO  
WATER DISTRICT; QUARTZ HILL WATER DISTRICT; SAN GABRIEL  
COUNTY WATER DISTRICT; WEST VALLEY WATER DISTRICT; LOS  
ANGELES COUNTY WATERWORKS DISTRICT NO. 21, KAGEL CANYON;  
LOS ANGELES COUNTY WATERWORKS DISTRICT NO. 29, MALIBU; LOS  
ANGELES COUNTY WATERWORKS DISTRICT NO. 36, VAL VERDE;  
CONSOLIDATED FIRE PROTECTION DISTRICT OF LOS ANGELES  
COUNTY; ATHENS-WOODCREST-OLIVITA GARBAGE DISPOSAL  
DISTRICT; BELVEDERE GARBAGE DISPOSAL DISTRICT; FIRESTONE  
GARBAGE DISPOSAL DISTRICT; LENNOX GARBAGE DISPOSAL  
DISTRICT; MESA HEIGHTS GARBAGE DISPOSAL DISTRICT; WALNUT  
PARK GARBAGE DISPOSAL DISTRICT; KINNELOA IRRIGATION  
DISTRICT; LA CANADA IRRIGATION DISTRICT; PALM RANCH  
IRRIGATION DISTRICT; SOUTH MONTEBELLO IRRIGATION DISTRICT;  
ALTADENA LIBRARY DISTRICT; PALOS VERDES LIBRARY DISTRICT;  
COMPTON CREEK MOSQUITO ABATEMENT DISTRICT; LOS ANGELES  
COUNTY WEST VECTOR & VECTOR-BORNE CONTROL DISTRICT; SAN**

**GABRIEL VALLEY MOSQUITO & VECTOR CONTROL DISTRICT; CENTRAL BASIN MUNICIPAL WATER DISTRICT; FOOTHILL MUNICIPAL WATER DISTRICT; GOLDEN VALLEY MUNICIPAL WATER DISTRICT; LAS VIRGENES MUNICIPAL WATER DISTRICT; SAN GABRIEL VALLEY MUNICIPAL WATER DISTRICT; UPPER SAN GABRIEL VALLEY MUNICIPAL WATER DISTRICT; THREE VALLEYS MUNICIPAL WATER DISTRICT; WEST BASIN MUNICIPAL WATER DISTRICT; ANTELOPE VALLEY RESOURCE CONSERVATION DISTRICT; RESOURCE CONSERVATION DISTRICT FOR THE SANTA MONICA MOUNTAINS; ANTELOPE VALLEY-EAST KERN WATER AGENCY; CASTAIC LAKE WATER AGENCY; AND THE WATER REPLENISHMENT DISTRICT OF SOUTHERN CALIFORNIA.**

WHEREAS, the Cortese-Knox-Hertzberg Local Governmental Reorganization Act of 2000 (California Government Code Section (Section) 56000 et seq) provides that a Local Agency Formation Commission (LAFCO) must adopt the Spheres of Influence (SOIs) of each local governmental agency within its jurisdiction (Section 56425(a)) and that it must update, as necessary, each Sphere every five years (Section 56425(g)); and

WHEREAS, the Sphere of Influence is the primary planning tool for LAFCO and defines the probable physical boundaries and service area of a local agency as determined by LAFCO;

WHEREAS, proceedings for adoption, update and amendment of a Sphere of Influence are described at Section 56427 et seq;

WHEREAS, Section 56430 requires that in order to prepare and to update Spheres of Influence, the Commission shall conduct a Municipal Service Review prior to or in conjunction with action to update or adopt a Sphere of Influence;

WHEREAS, the Local Agency Formation Commission for the County of Los Angeles (LA LAFCO, LAFCO, or Commission) has previously prepared Municipal Service Reviews (MSRs) as an accompanying report to the Sphere of Influence Updates

for the following cities: Agoura Hills, Alhambra, Artesia, Bell Gardens, Bellflower, Beverly Hills, Calabasas, Downey, El Monte, El Segundo, Hawaiian Gardens, Hermosa Beach, Lakewood, Lomita, Malibu, Manhattan Beach, Norwalk, Palos Verdes Estates, Paramount, Rancho Palos Verdes, Redondo Beach, Rolling Hills, San Fernando, Santa Monica, Sierra Madre, Signal Hill, South Pasadena, Torrance, West Hollywood, and Westlake Village and has furnished a copy of this report to each person entitled to a copy;

WHEREAS, the Commission has previously prepared MSRs as an accompanying report to the SOI Updates for the following special districts: Los Angeles County Sanitation District No. 4; Los Angeles County Sanitation District No. 9; Los Angeles County Sanitation District No. 19; Los Angeles County Sanitation District No. 27; Los Angeles County Sanitation District No. 29; Newhall Ranch Sanitation District of Los Angeles County; South Bay Cities County Sanitation District; Crescenta Valley Water District; La Habra Heights County Water District; La Puente Valley County Water District; Newhall County Water District; Orchard Dale Water District; Pico Water District; Quartz Hill Water District; San Gabriel County Water District; West Valley Water District; Los Angeles County Waterworks District No. 21, Kagel Canyon; Los Angeles County Waterworks District No. 29, Malibu; Los Angeles County Waterworks District No. 36, Val Verde; Consolidated Fire Protection District of Los Angeles County; Athens-Woodcrest-Olivita Garbage Disposal District; Belvedere Garbage Disposal District; Firestone Garbage Disposal District; Lennox Garbage Disposal District; Mesa Heights Garbage Disposal District; Walnut Park Garbage Disposal District; Kinneloa Irrigation District; La Canada Irrigation District; Palm Ranch Irrigation District;

South Montebello Irrigation District; Altadena Library District; Palos Verdes Library District; Compton Creek Mosquito Abatement District; Los Angeles County West Vector & Vector-Borne Control District; San Gabriel Valley Mosquito & Vector Control District; Central Basin Municipal Water District; Foothill Municipal Water District; Golden Valley Municipal Water District; Las Virgenes Municipal Water District; San Gabriel Valley Municipal Water District; Upper San Gabriel Valley Municipal Water District; Three Valleys Municipal Water District; West Basin Municipal Water District; Antelope Valley Resource Conservation District; Resource Conservation District for the Santa Monica Mountains; Antelope Valley-East Kern Water Agency; Castaic Lake Water Agency; and the Water Replenishment District of Southern California and has furnished a copy of this report to each person entitled to a copy;

WHEREAS the Commission previously reviewed the MSRs and approved SOI updates for the cities and special districts identified in this resolution during the initial MSR/SOI update cycle as required by Section 56425;

WHEREAS the information and findings contained in the MSR and SOI updates for each of the cities and special districts identified in this Resolution are current and do not raise any significant boundary or service-related issues;

WHEREAS, for each of the cities and special districts identified in this Resolution, staff has determined that the reconfirmation of existing MSR and SOI updates does not present any issues with respect to the present and probable need of Section 56425(d)(5) services Disadvantaged Unincorporated Communities (DUCs) either because there are no DUCs in or contiguous to these agencies, or because reconfirmation

of the SOI is consistent with the present and probable need for the itemized public services to any DUCs;

WHEREAS, based upon staff review and the feasibility of governmental reorganization identified in Section 56425(h), staff has determined that any such reorganizations will not further the goals of orderly development and affordable service delivery, and therefore will not recommend reorganization of the cities and special districts identified at this time;

WHEREAS, the Commission is able to establish the nature, location, and extent of any functions or classes of services provided by the existing districts, consistent with Section 56425 which information may be based in part upon written statements obtained by the Commission from the districts;

WHEREAS, the reports for the MSR and SOI updates for the cities and districts identified in this Resolution contain statements of determination as required by Section 56430 for the municipal services provided by the cities and districts;

WHEREAS, copies of the MSR and SOI reports, SOI maps, and statements of determination for each of the cities and special districts identified in this Resolution have been previously reviewed by the Commission and are available for public review in the Commission offices and on the Commission website;

WHEREAS, the Executive Officer, pursuant to Government Code Section 56427, set October 10<sup>th</sup>, 2012, as the hearing date on this MSR and SOI study proposal, and gave the required notice of public hearing;

WHEREAS, the Executive Officer notified the City Manager of each city identified in this Resolution in writing, of the Executive Officer's intent to agendize the

reconfirmation of each city's SOI as a public hearing item on the agenda for the October 10, 2012 Commission meeting;

WHEREAS, the Executive Officer also notified the General Manager of each special district identified in this Resolution in writing, of the Executive Officer's intent to agendize the reconfirmation of each city's SOI as a public hearing item on the agenda for the October 10, 2012 Commission meeting;

WHEREAS, the proposed action consists of the reconfirmation of the MSRs and SOIs for the following cities: Agoura Hills, Alhambra, Artesia, Bell Gardens, Bellflower, Beverly Hills, Calabasas, Downey, El Monte, El Segundo, Hawaiian Gardens, Hermosa Beach, Lakewood, Lomita, Malibu, Manhattan Beach, Norwalk, Palos Verdes Estates, Paramount, Rancho Palos Verdes, Redondo Beach, Rolling Hills, San Fernando, Santa Monica, Sierra Madre, Signal Hill, South Pasadena, Torrance, West Hollywood, and Westlake Village;

WHEREAS, the proposed action also consists of the reconfirmation of the MSRs and SOIs for the following special districts: Los Angeles County Sanitation District No. 4; Los Angeles County Sanitation District No. 9; Los Angeles County Sanitation District No. 19; Los Angeles County Sanitation District No. 27; Los Angeles County Sanitation District No. 29; Newhall Ranch Sanitation District of Los Angeles County; South Bay Cities County Sanitation District; Crescenta Valley Water District; La Habra Heights County Water District; La Puente Valley County Water District; Newhall County Water District; Orchard Dale Water District; Pico Water District; Quartz Hill Water District; San Gabriel County Water District; West Valley Water District; Los Angeles County Waterworks District No. 21, Kagel Canyon; Los Angeles County Waterworks District

No. 29, Malibu; Los Angeles County Waterworks District No. 36, Val Verde; Consolidated Fire Protection District of Los Angeles County; Athens-Woodcrest-Olivita Garbage Disposal District; Belvedere Garbage Disposal District; Firestone Garbage Disposal District; Lennox Garbage Disposal District; Mesa Heights Garbage Disposal District; Walnut Park Garbage Disposal District; Kinneloa Irrigation District; La Canada Irrigation District; Palm Ranch Irrigation District; South Montebello Irrigation District; Altadena Library District; Palos Verdes Library District; Compton Creek Mosquito Abatement District; Los Angeles County West Vector & Vector-Borne Control District; San Gabriel Valley Mosquito & Vector Control District; Central Basin Municipal Water District; Foothill Municipal Water District; Golden Valley Municipal Water District; Las Virgenes Municipal Water District; San Gabriel Valley Municipal Water District; Upper San Gabriel Valley Municipal Water District; Three Valleys Municipal Water District; West Basin Municipal Water District; Antelope Valley Resource Conservation District; Resource Conservation District for the Santa Monica Mountains; Antelope Valley-East Kern Water Agency; Castaic Lake Water Agency; and the Water Replenishment District of Southern California;

WHEREAS, this Commission called for and held a public hearing on the proposal on October 10, 2012, and at the hearing the Commission heard and received all oral and written protests, objections, and evidence which were made, presented, or filed, and all persons present were given an opportunity to hear and be heard with respect to this proposal and the report of the Executive Officer; and

WHEREAS, pursuant to the California Environmental Quality Act (CEQA), the reconfirmation of existing SOIs was determined to be categorically exempt under Section

15061 of the State CEQA Guideline because it can be seen with certainty that the recommended actions have no possibility of having a significant adverse effect on the environment because they reconfirm existing SOIs, and, in the alternative, that these recommendations are not a project for purposes of CEQA because they are organizational activities of governments with no direct nor indirect effects on the physical environment pursuant to Section 15378 of the State CEQA Guidelines.

NOW, THEREFORE, BE IT RESOLVED as follows:

1. The recommended actions are exempt from CEQA as set out herein.
2. The Executive Officer's staff report and recommendations for reconfirmation of the current MSRs and SOIs for the following cities are hereby adopted:  
  
Agoura Hills, Alhambra, Artesia, Bell Gardens, Bellflower, Beverly Hills, Calabasas, Downey, El Monte, El Segundo, Hawaiian Gardens, Hermosa Beach, Lakewood, Lomita, Malibu, Manhattan Beach, Norwalk, Palos Verdes Estates, Paramount, Rancho Palos Verdes, Redondo Beach, Rolling Hills, San Fernando, Santa Monica, Sierra Madre, Signal Hill, South Pasadena, Torrance, West Hollywood, and Westlake Village; and
3. The Executive Officer's staff report and recommendations for reconfirmation of the current MSRs and SOIs for the following special districts are hereby adopted: Los Angeles County Sanitation District No. 4; Los Angeles County Sanitation District No. 9; Los Angeles County Sanitation District No. 19; Los Angeles County Sanitation District No. 27; Los Angeles County Sanitation District No. 29; Newhall Ranch Sanitation District of Los Angeles County; South Bay Cities County Sanitation District; Crescenta Valley Water District;

La Habra Heights County Water District; La Puente Valley County Water District; Newhall County Water District; Orchard Dale Water District; Pico Water District; Quartz Hill Water District; San Gabriel County Water District; West Valley Water District; Los Angeles County Waterworks District No. 21, Kagel Canyon; Los Angeles County Waterworks District No. 29, Malibu; Los Angeles County Waterworks District No. 36, Val Verde; Consolidated Fire Protection District of Los Angeles County; Athens-Woodcrest-Olivita Garbage Disposal District; Belvedere Garbage Disposal District; Firestone Garbage Disposal District; Lennox Garbage Disposal District; Mesa Heights Garbage Disposal District; Walnut Park Garbage Disposal District; Kinneloa Irrigation District; La Canada Irrigation District; Palm Ranch Irrigation District; South Montebello Irrigation District; Altadena Library District; Palos Verdes Library District; Compton Creek Mosquito Abatement District; Los Angeles County West Vector & Vector-Borne Control District; San Gabriel Valley Mosquito & Vector Control District; Central Basin Municipal Water District; Foothill Municipal Water District; Golden Valley Municipal Water District; Las Virgenes Municipal Water District; San Gabriel Valley Municipal Water District; Upper San Gabriel Valley Municipal Water District; Three Valleys Municipal Water District; West Basin Municipal Water District; Antelope Valley Resource Conservation District; Resource Conservation District for the Santa Monica Mountains; Antelope Valley-East Kern Water Agency; Castaic Lake Water Agency; and the Water Replenishment District of Southern California; and

4. The Executive Officer is hereby directed to add the words “SOI Reconfirmed on October 10, 2012” to the official LAFCO maps for the cities and special districts referenced in Sections 1 and 2, above.
5. The Executive Officer is hereby authorized and directed to mail copies of this resolution as provided in Section 56882 of the Government Code.

PASSED AND ADOPTED this 10<sup>th</sup> day of October, 2012.

Ayes:  
Noes:  
Absent:  
Abstain:

---

PAUL A. NOVAK, Executive Officer

## **Staff Report**

**October 10, 2012**

### **Agenda Item No. 7.a.**

#### **Protest Hearing on Annexation No. 367 to Los Angeles County Sanitation District No. 14**

On August 8, 2012 your Commission approved a request initiated by Los Angeles County Sanitation District No. 14 to annex 30.140± acres of uninhabited territory into the boundaries of District No. 14. The Protest Hearing before you today will satisfy the requirements of Government Code section 57000, *et seq.*

The annexation proposal is summarized as follows:

***Proposal Area:*** The annexation consists of vacant land and is located within a vacant residential area. The territory is being developed to include 98 proposed single-family homes within a vacant residential area.

***Location:*** The affected territory is located on Avenue L at its intersection with 55<sup>th</sup> Street West, all within the City of Lancaster ("City").

***Population:*** The current population is 0.

***Landowners/Registered Voters:*** There are numerous owners of record. As of June 1, 2010, there were no registered voters.

***Topography, Natural Boundaries and Drainage Basins:*** The topography is flat.

***Zoning, Present and Future Land Use:*** The current zoning is [R-7000] Single-Family Residential and [R-10000]; Single-Family Residential. The present land use is vacant land use. The proposed land use is residential.

***Surrounding Land Use:*** The land use in the surrounding territory is vacant residential.

***Assessed Value:*** The total assessed value is \$2,887,000.

***Governmental Services and Control, Availability and Adequacy:*** The subject territory is not currently serviced by the District. However, the area was included in the future service area that might be served by the District and the District's future wastewater management needs were addressed in the Lancaster Water Reclamation Plant (LWRP) 2020 Facilities Plan. The wastewater generated by the proposed project will be treated at the LWRP. The District will have adequate capacity to collect, treat, and dispose of the wastewater anticipated to be generated by the subject territory

***Effects on agricultural or open-space lands:*** The proposal will not have an effect on agricultural or open space lands.

***Boundaries and Lines of Assessment:*** The boundary of the proposed annexation conforms to the recorded lines of assessment.

***Sphere of Influence:*** The affected territory is within the sphere of influence of District No. 14.

***Tax Resolution:*** All affected agencies have adopted a negotiated tax exchange resolution.

***CEQA:*** The City of Lancaster adopted Mitigated Negative Declarations (MNDs) for the subject property on June 20, 2005. The MND for both the proposed 40-unit subdivision and the proposed 58-unit subdivision contemplated annexation of the subject properties into County Sanitation District 14. The MND is adequate for consideration of this proposal.

***Correspondence:*** No correspondence has been received.

**Recommended Action:**

1. Open the protest hearing and receive written protests.
2. Close the protest hearing.
3. Instruct the Executive Officer, pursuant to Government Code Section 57075, to determine the value of protests filed and not withdrawn and report back to the Commission with the results.
4. Based upon the results of the protest hearing either adopt a resolution terminating the annexation proceedings if a majority protest exists or ordering Annexation No. 367 to Los Angeles County Sanitation District No. 14 directly if written protests have been filed and not withdrawn by owners of land who own less than 50 percent of the total assessed value of land within the affected territory.

**RESOLUTION NO. 2012-00PR  
RESOLUTION OF THE LOCAL AGENCY FORMATION  
COMMISSION FOR LOS ANGELES COUNTY  
MAKING DETERMINATIONS ORDERING  
"ANNEXATION NO. 367 TO  
LOS ANGELES COUNTY SANITATION DISTRICT NO. 14"**

WHEREAS, the Los Angeles County Sanitation District No. 14 filed an application to initiate proceedings before the Local Agency Formation Commission for Los Angeles County (the "Commission") pursuant to Part 3, Division 3, Title 5 of the California Government Code (commencing with section 56000, the Cortese-Knox-Hertzberg Local Government Reorganization Act of 2000), for the annexation of territory located within the city of Lancaster; and

WHEREAS the principal reason for the proposed annexation is to provide offsite sewage disposal for 98 proposed single-family homes; and

WHEREAS, a description of the boundaries and map of the proposal are set forth in Exhibits "A" and "B", attached hereto and by this reference incorporated herein; and

WHEREAS, the territory consists of 30.140± acres and is uninhabited; and

WHEREAS, the short-form designation given this proposal is "Annexation No. 367 to County Sanitation District No. 14"; and

WHEREAS, on August 8, 2012, the Commission approved Annexation No. 367 to County Sanitation District No. 14; and

WHEREAS, pursuant to Government Code Section 57002, the Executive Officer of the Commission has set October 10, 2012 as the date for the protest hearing and has given notice thereof; and

WHEREAS, at the time and place fixed in the notice, the hearing was held, and

any and all oral or written protests, objections and evidence were received and considered; and

WHEREAS, the Commission, acting as the conducting authority, has the ministerial duty of tabulating the value of protests filed and not withdrawn and either terminating these proceedings if a majority protest exists or ordering the annexation directly if there is no majority protest.

NOW, THEREFORE, BE IT RESOLVED as follows:

1. The Commission finds that the number of registered voters within the boundary of the territory is 0 and the number of property owners is 1 and the total assessed value of land within the affected territory is \$2,887,000.
2. The Commission finds that the number of written protests filed in opposition to Annexation No. 367 to County Sanitation District No. 14 and not withdrawn is \_\_\_, which, even if valid, represents owners of land who own less than 50 percent of the total assessed value of land within the affected territory.
3. The Commission hereby orders the annexation of the territory described in Exhibits "A" and "B" hereto, to the Los Angeles County Sanitation District No. 14.

4. Pursuant to Government Code section 56886, the annexation shall be subject to the following terms and conditions:
  - a. The territory so annexed shall be subject to the payment of such service charges, assessments or taxes as the Los Angeles County Sanitation District No. 14 may legally impose.
  - b. The regular County assessment roll shall be utilized by the Los Angeles County Sanitation District No. 14.
  - c. The affected territory will be taxed for existing bonded indebtedness, if any, of the Los Angeles County Sanitation District No 14.
  - d. Except to the extent in conflict with a through c, above, the general terms and conditions contained in Chapter 2 of Part 5, Division 3, Title 5 of the California Government Code (commencing with Government Code Section 57325) shall apply to this annexation.
5. The Executive Officer is directed to transmit a certified copy of this resolution to the General Manager of the District, upon the District's payment of the applicable fees required by Government Code Section 54902.5, and prepare, execute and file a certificate of completion with the appropriate public agencies, pursuant to Government Code Section 57000, *et seq.*

PASSED AND ADOPTED this 10<sup>th</sup> day of October 2012.

Ayes:

Noes:

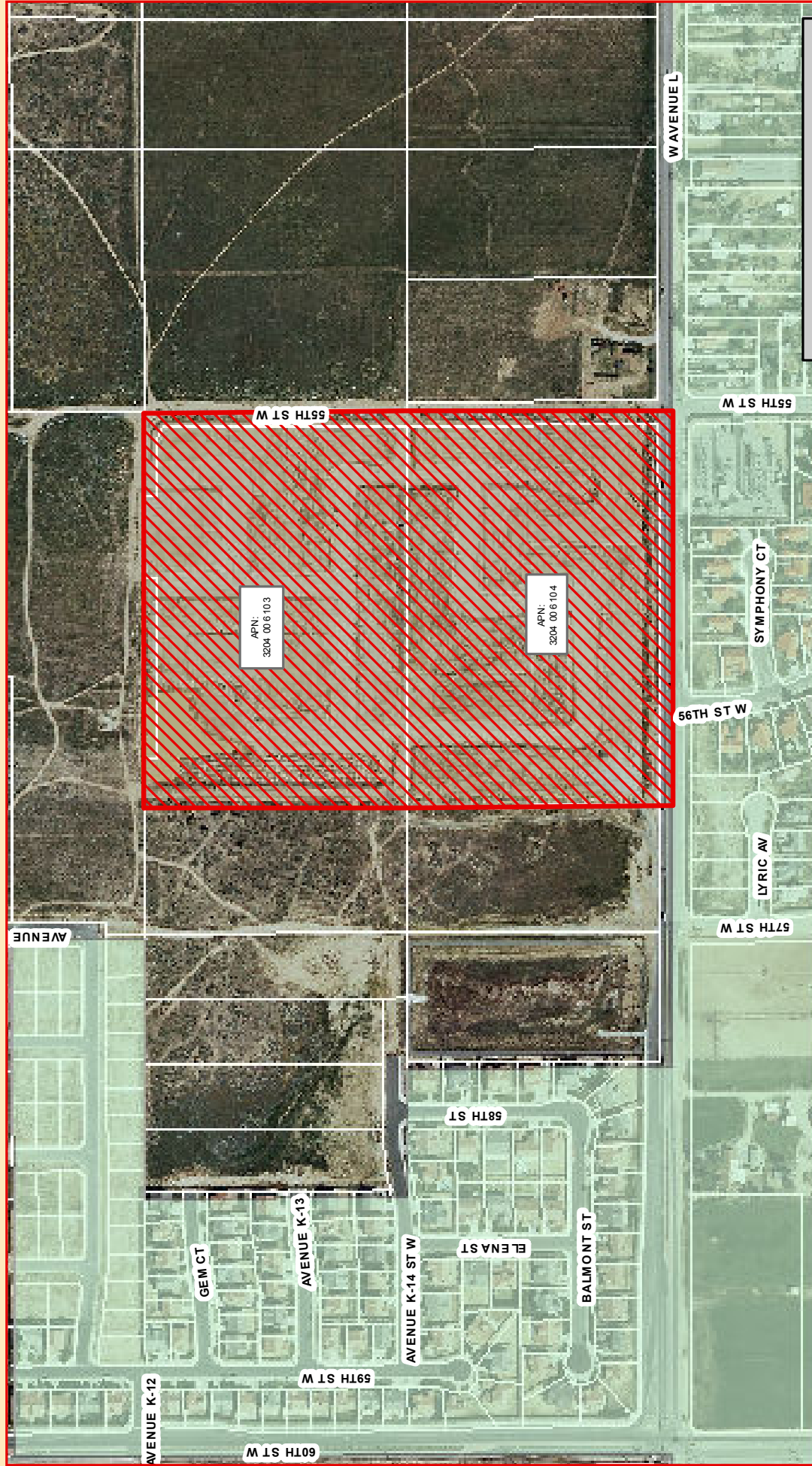
Absent:

Abstain:

**LOCAL AGENCY FORMATION COMMISSION  
FOR THE COUNTY OF LOS ANGELES**

---

**PAUL A. NOVAK, AICP**  
**Executive Officer**



Los Angeles County  
Sanitation District No. 14

City of Lancaster

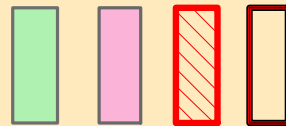
CSD Annexation 14-367

Sphere of Influence, CSD 14

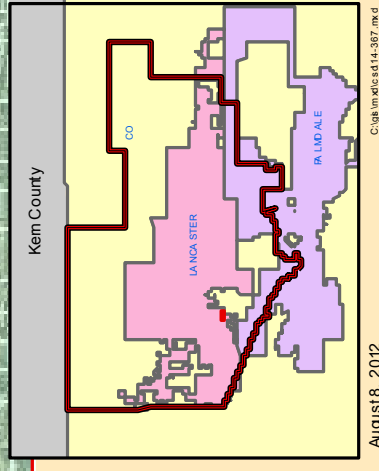
# Annexation No. 367

## County Sanitation

### District No. 14



**LAFCO**  
Local Agency Formation Study  
for the County of Los Angeles



August 8, 2012

C:\gms\mxd\14-367.mxd

## **Staff Report**

**October 10, 2012**

### **Agenda Item No. 7.b.**

#### **Protest Hearing on Annexation No. 408 to Los Angeles County Sanitation District No. 14**

On August 8, 2012 your Commission approved a request initiated by Los Angeles County Sanitation District No. 14 to annex 5.000± acres of inhabited territory into the boundaries of District No. 14. The Protest Hearing before you today will satisfy the requirements of Government Code section 57000, *et seq.*

The annexation proposal is summarized as follows:

***Proposal Area:*** The annexation consists of a 75-unit apartment complex.

***Location:*** The affected territory is located on Colombia Way between 67<sup>th</sup> Street West and 70<sup>th</sup> Street West, all within the unincorporated area of Los Angeles County.

***Population:*** The current population is 47.

***Landowners/Registered Voters:*** Lancaster RHF Housing, Inc. As of May 7, 2012 there were 15 registered voters.

At your August 8, 2012 Commission meeting, the staff report noted that the affected territory had 8 registered voters and is an uninhabited annexation. Upon further investigation after your August 8<sup>th</sup> hearing, staff learned that the affected territory actually has 15 registered voters and is, therefore, an inhabited annexation. Based upon this information, staff provided written notice of the protest hearing to all 15 registered voters.

Pursuant to Government Code Section 56883, the Executive Officer is authorized to correct “clerical errors or mistakes made through inadvertence, surprise, or excusable neglect that may be contained in the resolution adopted by the commission making determinations.” The staff recommendation before you today references this section and instructs the Executive Officer to make the appropriate changes to correct the inadvertent errors in the resolution adopted at your August 8, 2012 Commission meeting so that the annexation may be corrected documented and completed timely.

***Topography, Natural Boundaries and Drainage Basins:*** The topography is flat.

***Zoning, Present and Future Land Use:*** The current zoning is [A-1-5000]; Light Agricultural. The present and proposed land use is residential.

***Surrounding Land Use:*** The land use in the surrounding territory is residential.

***Assessed Value:*** The total assessed value is \$5,972,423.

***Governmental Services and Control, Availability and Adequacy:*** The subject territory is already being serviced by the District. The area was included in the future service area that might be served by the District and the District's future wastewater management needs were addressed in the Lancaster Water Reclamation Plant (LWRP) 2020 Facilities Plan. The wastewater generated by the annexation is being treated at the LWRP. The District has adequate capacity to collect, treat, and dispose of the wastewater generated by the subject territory.

***Effects on agricultural or open-space lands:*** The proposal will not have an effect on agricultural or open space lands.

***Boundaries and Lines of Assessment:*** The boundary of the proposed annexation conforms to the recorded lines of assessment.

***Sphere of Influence:*** The affected territory is within the sphere of influence of District No. 14.

***Tax Resolution:*** All affected agencies have adopted a negotiated tax exchange resolution.

***CEQA:*** The Los Angeles County Board of Supervisors adopted a Negative Declaration on September 2, 2009 for the proposed project (a 75-unit apartment complex), which is adequate for consideration of this proposal. Los Angeles County Department of Public Works reviewed and approved a Sewer Area Study and concluded that no mitigation measures were needed.

***Correspondence:*** No correspondence has been received.

**Recommended Action:**

1. Open the protest hearing and receive written protests.
2. Close the protest hearing.
3. Instruct the Executive Officer, pursuant to Government Code Section 57075, to determine the value of protests filed and not withdrawn and report back to the Commission with the results.
4. Based upon the results of the protest hearing either adopt a resolution terminating the annexation proceedings if a majority protest exists or ordering Annexation No. 408 to Los Angeles County Sanitation District No. 14 directly or ordering the annexation subject to confirmation by the registered voters of the affected territory.

5. Instruct the Executive Officer, good cause being shown pursuant to Section 56883, to correct Resolution 2012-39 adopted by the Commission at the August 8, 2012 meeting, to conform the determination to reflect that Annexation No. 408 to Los Angeles County Sanitation District No. 14 is an inhabited annexation of affected territory in which there reside 15 registered voters.

**RESOLUTION NO. 2012-00PR  
RESOLUTION OF THE LOCAL AGENCY FORMATION  
COMMISSION FOR LOS ANGELES COUNTY  
MAKING DETERMINATIONS ORDERING  
"ANNEXATION NO. 408 TO  
LOS ANGELES COUNTY SANITATION DISTRICT NO. 14"**

WHEREAS, the Los Angeles County Sanitation District No. 14 filed an application to initiate proceedings before the Local Agency Formation Commission for Los Angeles County (the "Commission") pursuant to Part 3, Division 3, Title 5 of the California Government Code (commencing with section 56000, the Cortese-Knox-Hertzberg Local Government Reorganization Act of 2000), for the annexation of territory located within the unincorporated area of Los Angeles County; and

WHEREAS the principal reason for the proposed annexation is to provide offsite sewage disposal for a 75-unit apartment complex; and

WHEREAS, a description of the boundaries and map of the proposal are set forth in Exhibits "A" and "B", attached hereto and by this reference incorporated herein; and

WHEREAS, the territory consists of 5.000± acres and is inhabited; and

WHEREAS, the short-form designation given this proposal is "Annexation No. 408 to County Sanitation District No. 14"; and

WHEREAS, on August 8, 2012, the Commission approved Annexation No. 408 to County Sanitation District No. 14; and

WHEREAS, pursuant to Government Code Section 57002, the Executive Officer of the Commission has set October 10, 2012 as the date for the protest hearing and has given notice thereof; and

WHEREAS, at the time and place fixed in the notice, the hearing was held, and

any and all oral or written protests, objections and evidence were received and considered; and

WHEREAS, the Commission, acting as the conducting authority, has the ministerial duty of tabulating the value of protests filed and not withdrawn and either terminating these proceedings if a majority protest exists or ordering the annexation directly, or subject to confirmation by the registered voters.

NOW, THEREFORE, BE IT RESOLVED as follows:

1. The Commission finds that the number of registered voters within the boundary of the territory is 15 and the number of property owners is 1 and the total assessed value of land within the affected territory is \$5,972,423.
2. The Commission finds that the number of written protests filed in opposition to Annexation No. 408 to County Sanitation District No. 14 and not withdrawn is 0, which, even if valid, represents less than 25 percent of the number of registered voters residing within the boundaries of the affected territory, and less than 25 percent of the number of owners of land who also own at least 25 percent of the assessed value of land within the affected territory.
3. The Commission hereby orders the annexation of the territory described in Exhibits "A" and "B" hereto, to the Los Angeles County Sanitation District No. 14.

4. Pursuant to Government Code section 56886, the annexation shall be subject to the following terms and conditions:
  - a. The territory so annexed shall be subject to the payment of such service charges, assessments or taxes as the Los Angeles County Sanitation District No. 14 may legally impose.
  - b. The regular County assessment roll shall be utilized by the Los Angeles County Sanitation District No. 14.
  - c. The affected territory will be taxed for existing bonded indebtedness, if any, of the Los Angeles County Sanitation District No 14.
  - d. Except to the extent in conflict with a through c, above, the general terms and conditions contained in Chapter 2 of Part 5, Division 3, Title 5 of the California Government Code (commencing with Government Code Section 57325) shall apply to this annexation.
5. The Executive Officer is directed to transmit a certified copy of this resolution to the General Manager of the District, upon the District's payment of the applicable fees required by Government Code Section 54902.5, and prepare, execute and file a certificate of completion with the appropriate public agencies, pursuant to Government Code Section 57000, *et seq.*

PASSED AND ADOPTED this 10<sup>th</sup> day of October 2012.

Ayes:

Noes:

Absent:

Abstain:

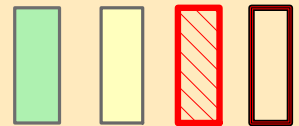
**LOCAL AGENCY FORMATION COMMISSION  
FOR THE COUNTY OF LOS ANGELES**

---

**PAUL A. NOVAK, AICP**  
**Executive Officer**



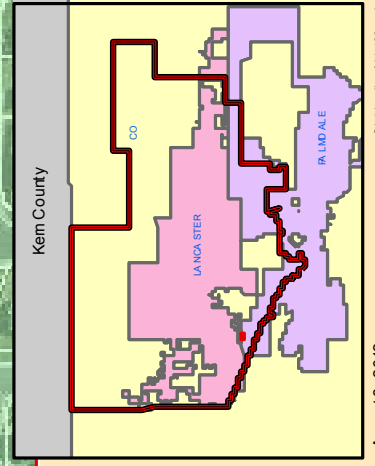
- Los Angeles County Sanitation District No. 14
- Unincorporated County Territory
- CSD Annexation 14-408
- Sphere of Influence, CSD 14



# Annexation No. 408 County Sanitation District No. 14



**LAFCO**  
 Local Agency Formation Commission  
 for the County of Los Angeles



August 8, 2012

C:\gismx\slid14-408.mxd

## **Staff Report**

**October 10, 2012**

### **Agenda Item No. 7.c.**

#### **Protest Hearing on Annexation No. 718 to Los Angeles County Sanitation District No. 21**

On August 8, 2012 your Commission approved a request initiated by Los Angeles County Sanitation District No. 21 to annex 4.417± acres of uninhabited territory into the boundaries of District No. 21. The Protest Hearing before you today will satisfy the requirements of Government Code section 57000, *et seq.*

The annexation proposal is summarized as follows:

***Proposal Area:*** The annexation consists of nine single-family homes and is located within a residential area. The territory is being developed to include one proposed single-family home within a residential area.

***Location:*** The affected territory is located on Los Altos Drive approximately 900 feet southwest from its intersection with Turnbull Canyon Road, all within the unincorporated area of Los Angeles.

***Population:*** The current population is 45.

***Landowners/Registered Voters:*** There are numerous owners of record. As of December 17, 2009 there were no registered voters.

***Topography, Natural Boundaries and Drainage Basins:*** The topography is gently sloping.

***Zoning, Present and Future Land Use:*** The current zoning is [R-A-15000] Residential-Agricultural. The present and proposed land use is residential.

***Surrounding Land Use:*** The land use in the surrounding territory is residential.

***Assessed Value:*** The total assessed value is \$10,924,859.

***Governmental Services and Control, Availability and Adequacy:*** A portion of the subject territory is already being serviced by the District. The entire subject territory was included in the future service area that might be served by the District and the District's future wastewater management needs were addressed in the Joint Outfall System (JOS) 2010 Master Facilities Plan. The wastewater generated by the annexation will be treated by the JOS, which is comprised of 6 upstream water reclamation plants and the Joint Water Pollution Control Plant. The District has adequate capacity to collect, treat, and dispose of the wastewater generated by the subject territory.

***Effects on agricultural or open-space lands:*** The proposed annexation will not have an effect on agricultural or open space lands.

***Boundaries and Lines of Assessment:*** The boundary of the proposed annexation conforms to the recorded lines of assessment.

***Sphere of Influence:*** The affected territory is within the sphere of influence of District No. 21.

***Tax Resolution:*** All affected agencies have adopted a negotiated tax exchange resolution.

***CEQA:*** The County of Los Angeles adopted a Negative Declaration for the subject property on September 25, 2001. The Negative Declaration for a proposed 10-unit subdivision contemplated annexation of the subject property into County Sanitation District 21 and is adequate for the consideration of this proposal.

***Correspondence:*** No correspondence has been received.

**Recommended Action:**

1. Open the protest hearing and receive written protests.
2. Close the protest hearing.
3. Instruct the Executive Officer, pursuant to Government Code Section 57075, to determine the value of protests filed and not withdrawn and report back to the Commission with the results.
4. Based upon the results of the protest hearing either adopt a resolution terminating the annexation proceedings if a majority protest exists, ordering Annexation No. 718 to Los Angeles County Sanitation District No. 21 directly, if written protests have been filed and not withdrawn by owners of land who own less than 50 percent of the total assessed value of land within the affected territory.

**RESOLUTION NO. 2012-00PR  
RESOLUTION OF THE LOCAL AGENCY FORMATION  
COMMISSION FOR LOS ANGELES COUNTY  
MAKING DETERMINATIONS ORDERING  
"ANNEXATION NO. 718 TO  
LOS ANGELES COUNTY SANITATION DISTRICT NO. 21"**

WHEREAS, the Los Angeles County Sanitation District No. 20 filed an application to initiate proceedings before the Local Agency Formation Commission for Los Angeles County (the "Commission") pursuant to Part 3, Division 3, Title 5 of the California Government Code (commencing with section 56000, the Cortese-Knox-Hertzberg Local Government Reorganization Act of 2000), for the annexation of territory located within the Unincorporated area of Los Angeles; and

WHEREAS, the principal reason for the proposed annexation is to provide offsite sewage disposal for one proposed single-family home; and

WHEREAS, a description of the boundaries and map of the proposal are set forth in Exhibits "A" and "B", attached hereto and by this reference incorporated herein; and

WHEREAS, the territory consists of 4.417± acres and is uninhabited; and

WHEREAS, the short-form designation given this proposal is "Annexation No. 718 to County Sanitation District No. 21"; and

WHEREAS, on August 8, 2012, the Commission approved Annexation No. 718 to County Sanitation District No. 21; and

WHEREAS, pursuant to Government Code Section 57002, the Executive Officer of the Commission has set October 10, 2012 as the date for the protest hearing and has given notice thereof; and

WHEREAS, at the time and place fixed in the notice, the hearing was held, and

any and all oral or written protests, objections and evidence were received and considered; and

WHEREAS, the Commission, acting as the conducting authority, has the ministerial duty of tabulating the value of protests filed and not withdrawn and either terminating these proceedings if a majority protest exists or ordering the annexation directly if there is no majority protest.

NOW, THEREFORE, BE IT RESOLVED as follows:

1. The Commission finds that the number of registered voters within the boundary of the territory is 0 and the number of property owners is 10 and the total assessed value of land within the affected territory is \$10,924,859.
2. The Commission finds that the number of written protests filed in opposition to Annexation No. 718 to County Sanitation District No. 21 and not withdrawn is 0, which, even if valid, represents owners of land who own less than 50 percent of the total assessed value of the land within the affected territory.
3. The Commission hereby orders the annexation of the territory described in Exhibits "A" and "B" hereto, to the Los Angeles County Sanitation District No. 21.

4. Pursuant to Government Code section 56886, the annexation shall be subject to the following terms and conditions:
  - a. The territory so annexed shall be subject to the payment of such service charges, assessments or taxes as the Los Angeles County Sanitation District No. 21 may legally impose.
  - b. The regular County assessment roll shall be utilized by the Los Angeles County Sanitation District No. 21.
  - c. The affected territory will be taxed for existing bonded indebtedness, if any, of the Los Angeles County Sanitation District No 21.
  - d. Except to the extent in conflict with a through c, above, the general terms and conditions contained in Chapter 2 of Part 5, Division 3, Title 5 of the California Government Code (commencing with Government Code Section 57325) shall apply to this annexation.
5. The Executive Officer is directed to transmit a certified copy of this resolution to the General Manager of the District, upon the District's payment of the applicable fees required by Government Code Section 54902.5, and prepare, execute and file a certificate of completion with the appropriate public agencies, pursuant to Government Code Section 57000, *et seq.*

PASSED AND ADOPTED this 10<sup>th</sup> day of October 2012.

Ayes:

Noes:

Absent:

Abstain:

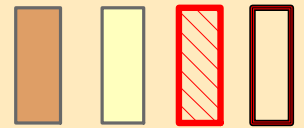
**LOCAL AGENCY FORMATION COMMISSION  
FOR THE COUNTY OF LOS ANGELES**

---

**PAUL A. NOVAK, AICP  
Executive Officer**



- Los Angeles County  
Sanitation District No. 21
- Unincorporated County  
Territory
- CSD Annexation 21-718
- Sphere of Influence, CSD 21

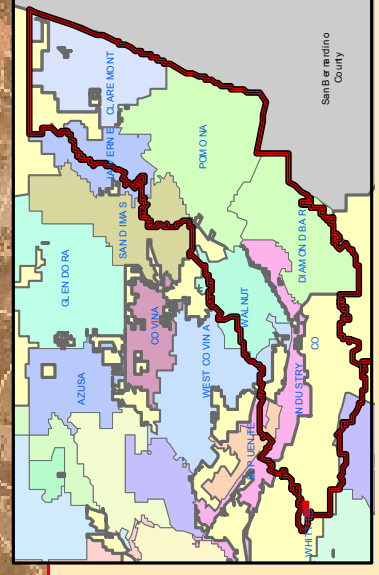


# Annexation No. 718

## County Sanitation District No. 21



**LAFCO**  
San Joaquin County



## **Staff Report**

**October 10, 2012**

### **Agenda Item No. 7.d.**

#### **Protest Hearing on Annexation No. 1011 to The Santa Clarita Valley Sanitation District of Los Angeles County (SCVSD)**

On August 8, 2012 your Commission approved a request initiated by the Santa Clarita Valley Sanitation District of Los Angeles County to annex 63.941± acres of inhabited territory into the boundaries of the SCVSD. The Protest Hearing before you today will satisfy the requirements of Government Code section 57000, *et seq.*

The annexation proposal is summarized as follows:

***Proposal Area:*** The territory consists of one single-family home and three mobile home parks (total of 251 units) and is located within a residential area

***Location:*** The affected territory has 2 parcels. Parcel 1 is located on Sierra Highway at its intersection with Sand Canyon Road; Parcel 2 is located on Vasquez Canyon Road approximately 700 feet northwesterly of its intersection with Sierra Highway, all within the unincorporated area of Los Angeles County.

***Population:*** The current population is 658.

***Registered Voters/Landowners:*** There are 5 owners of record. As of July 27, 2009 there were 304 registered voters.

***Topography, Natural Boundaries and Drainage Basins:*** The topography is slightly sloping.

***Zoning, Present and Future Land Use:*** The current zoning is [A-1-6000-DP] Light Agricultural and [A-1-10000-DP] light Agricultural. The present and proposed land use is residential.

***Surrounding Land Use:*** The land use in the surrounding territory is residential.

***Assessed Value:*** The total assessed value is \$3,511,395.

***Governmental Services and Control, Availability and Adequacy:*** The subject territory is already being serviced by the SCVSD. The area was included in the future service area that might be served by the SCVSD and the SCVSD's future wastewater management needs were addressed in the 2015 Santa Clarita Valley Joint Sewerage Facilities Plan and EIR. The wastewater generated by the annexation is being treated by the Santa Clarita Valley Joint Sewerage System, which is comprised of the Saugus and Valencia Water reclamation plants. The SCVSD has adequate capacity to collect treat, and dispose of the wastewater generated by the subject territory.

***Effects on agricultural or open-space lands:*** The proposal will not have an effect on agricultural or open space lands.

***Boundaries and Lines of Assessment:*** The boundary of the proposed annexation conforms to the recorded lines of assessment.

***Sphere of Influence:*** The affected territory is within the sphere of influence of SCVSD.

***Tax Resolution:*** All affected agencies have adopted a negotiated tax exchange resolution.

***CEQA:*** The affected territory is categorically exempt from the provisions of the California Environmental Quality Act (CEQA) pursuant to State CEQA Guidelines Section 15319(a), because it is an annexation containing existing structures developed to the density allowed by the current zoning. Staff of the County Sanitation Districts adopted a Categorical Exemption on January 31, 2001.

***Correspondence:*** No correspondence has been received.

**Recommended Action:**

1. Open the protest hearing and receive written protests.
2. Close the protest hearing.
3. Instruct the Executive Officer, pursuant to Government Code Section 57075, to determine the value of protests filed and not withdrawn and report back to the Commission with the results.
4. Based upon the results of the protest hearing either adopt a resolution terminating the annexation proceedings if a majority protest exists, ordering Annexation No. 1016 to the Santa Clarita Valley Sanitation District of Los Angeles County directly or ordering the annexation subject to confirmation by the registered voters of the affected territory.

**RESOLUTION NO. 2012-00PR  
RESOLUTION OF THE LOCAL AGENCY FORMATION  
COMMISSION FOR LOS ANGELES COUNTY  
MAKING DETERMINATIONS ORDERING  
"ANNEXATION NO. 1011 TO THE  
SANTA CLARITA VALLEY SANITATION DISTRICT  
OF LOS ANGELES COUNTY (SCVSD)"**

WHEREAS, the SCVSD filed an application to initiate proceedings before the Local Agency Formation Commission for Los Angeles County (the "Commission") pursuant to Part 3, Division 3, Title 5 of the California Government Code (commencing with section 56000, the Cortese-Knox-Hertzberg Local Government Reorganization Act of 2000), for the annexation of territory to the SCVSD; and

WHEREAS, the principal reason for the proposed annexation is to provide offsite sewage disposal for one single-family home and three mobile home parks (total of 251 units); and

WHEREAS, a description of the boundaries and map of the proposal are set forth in Exhibits "A" and "B", attached hereto and by this reference incorporated herein; and

WHEREAS, the territory consists of 63.941± acres and is inhabited; and

WHEREAS, the short-form designation given this proposal is "Annexation No. 1011 to the Santa Clarita Valley Sanitation District of Los Angeles County"; and

WHEREAS, on August 8, 2012, the Commission approved Annexation No. 1011 to the SCVSD; and

WHEREAS, pursuant to Government Code Section 57002, the Executive Officer of the Commission has set October 10, 2012 as the date for the protest hearing and has given notice thereof; and

WHEREAS, at the time and place fixed in the notice, the hearing was held, and

any and all oral or written protests, objections and evidence were received and considered; and

WHEREAS, the Commission, acting as the conducting authority, has the ministerial duty of tabulating the value of protests filed and not withdrawn and either terminating these proceedings if a majority protest exists or ordering the annexation directly or subject to confirmation by the registered voters.

NOW, THEREFORE, BE IT RESOLVED as follows:

1. The Commission finds that the number of registered voters within the boundary of the territory is 304. The number of property owners is 5 and the total assessed value of land within the affected territory is \$3,511,395.
2. The Commission finds that the number of written protests filed in opposition to Annexation No. 1011 to the SCVSD and not withdrawn is \_\_\_\_, which, even if valid, represents less than 25 percent of the number of registered voters residing within the boundaries of the affected territory, and less than 25 percent of the number of owners of land who also own at least 25 percent of the assessed value of land within the affected territory.
3. The Commission hereby orders the annexation of the territory described in Exhibits "A" and "B" hereto, to the SCVSD.

4. Pursuant to Government Code section 56886, the annexation shall be subject to the following terms and conditions:
  - a. The territory so annexed shall be subject to the payment of such service charges, assessments or taxes as the SCVSD may legally impose.
  - b. The regular County assessment roll shall be utilized by the SCVSD.
  - c. The affected territory will be taxed for existing bonded indebtedness, if any, of the SCVSD.
  - d. Except to the extent in conflict with a through c, above, the general terms and conditions contained in Chapter 2 of Part 5, Division 3, Title 5 of the California Government Code (commencing with Government Code Section 57325) shall apply to this annexation.
5. The Executive Officer is directed to transmit a certified copy of this resolution to the General Manager of the District, upon the District's payment of the applicable fees required by Government Code Section 54902.5, and prepare, execute and file a certificate of completion with the appropriate public agencies, pursuant to Government Code Section 57000, *et seq.*

PASSED AND ADOPTED this 10<sup>th</sup> day of October 2012.

Ayes:

Noes:

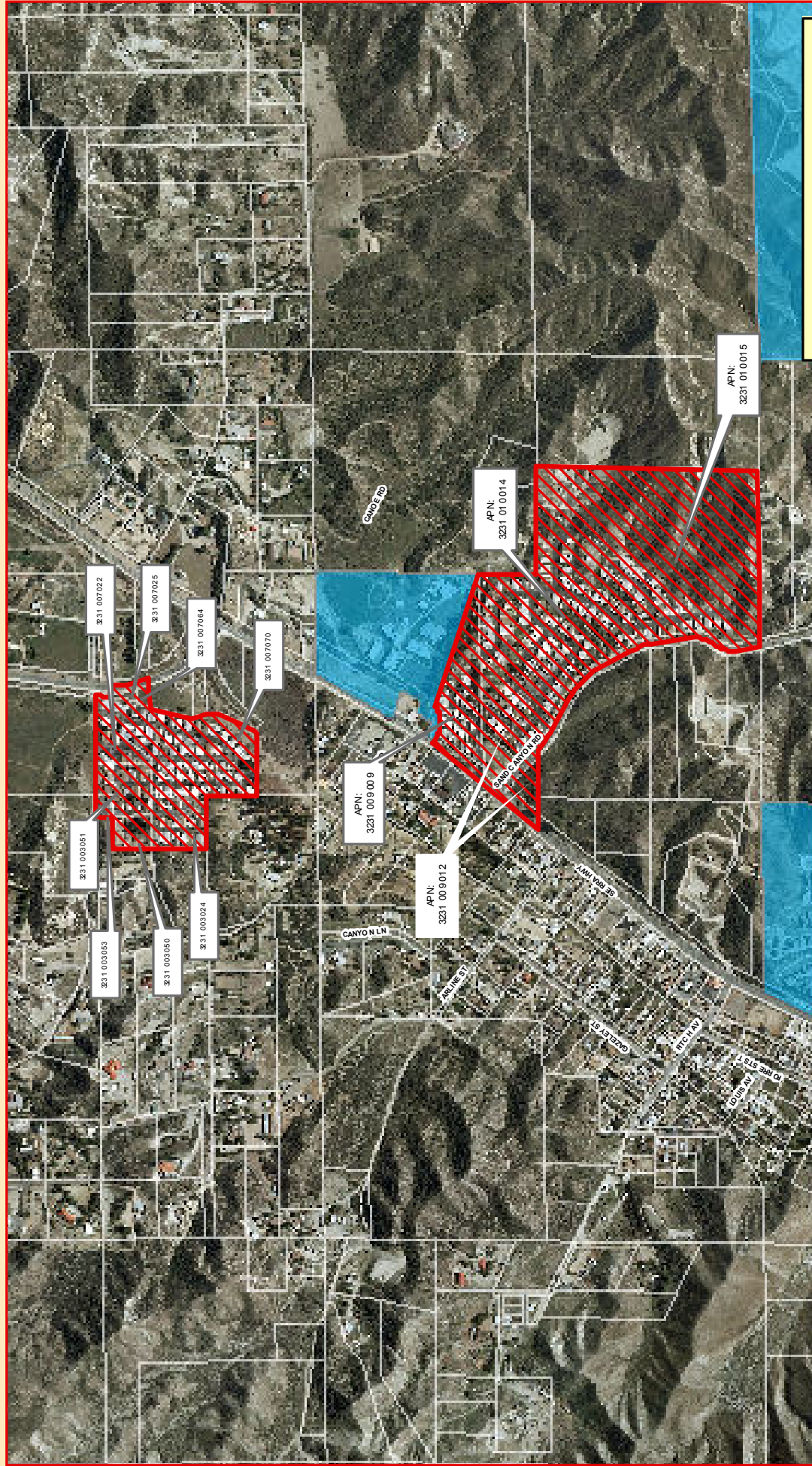
Absent:

Abstain:

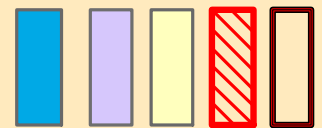
**LOCAL AGENCY FORMATION COMMISSION  
FOR THE COUNTY OF LOS ANGELES**

---

**PAUL A. NOVAK, AICP**  
**Executive Officer**



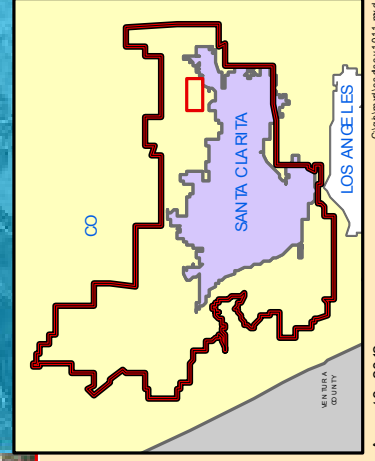
- Santa Clarita Valley Sanitation District of Los Angeles County
- City of Santa Clarita
- Unincorporated County Territory
- CSD Annexation SCV-1011
- Sphere of Influence, Santa Clarita Valley CSD



# Annexation No. 1011 Santa Clarita Valley Sanitation District of Los Angeles County



**LAFCO**  
Los Angeles County  
Sanitation Districts



## **Staff Report**

**October 10, 2012**

### **Agenda Item No. 7.e.**

#### **Protest Hearing on Annexation No. 1016 to The Santa Clarita Valley Sanitation District of Los Angeles County (SCVSD)**

On August 8, 2012 your Commission approved a request initiated by the Santa Clarita Valley Sanitation District of Los Angeles County to annex 10.141± acres of uninhabited territory into the boundaries of the SCVSD. The Protest Hearing before you today will satisfy the requirements of Government Code section 57000, *et seq.*

The annexation proposal is summarized as follows:

***Proposal Area:*** The subject property is developed with an existing 55-unit condominium building.

***Location:*** The affected territory is located on Sierra Highway approximately 1,900 feet north of Soledad Canyon Road, all within the City of Santa Clarita.

***Population:*** The current population is 0.

***Registered Voters/Landowners:*** There are numerous owners of record. As of September 3, 2009 there were no registered voters.

***Topography, Natural Boundaries and Drainage Basins:*** The topography is flat to hilly.

***Zoning, Present and Future Land Use:*** The current zoning is [RM]; Rural Moderate. The present land use is vacant. The proposed land use is residential.

***Surrounding Land Use:*** The land use in the surrounding territory is commercial and residential.

***Assessed Value:*** The total assessed value is \$2,687,991.

***Governmental Services and Control, Availability and Adequacy:*** The subject territory is not currently being serviced by the District. However, the area was included in the future service area that might be served by the SCVSD and the SCVSD's future wastewater management needs were addressed in the 2015 Santa Clarita Valley Joint Sewerage Facilities Plan and EIR. The wastewater generated by the proposed project will be treated by the Santa Clarita Valley Joint Sewerage System, which is comprised of the Saugus and Valencia Water reclamation plants. The SCVSD will have adequate capacity to collect, treat, and dispose of the wastewater generated by the subject territory.

***Effects on agricultural or open-space lands:*** The proposal will not have an effect on agricultural or open space lands.

***Boundaries and Lines of Assessment:*** The boundary of the proposed annexation conforms to the recorded lines of assessment.

***Sphere of Influence:*** The affected territory is within the sphere of influence of SCVSD.

***Tax Resolution:*** All affected agencies have adopted a negotiated tax exchange resolution.

***CEQA:*** The City of Santa Clarita adopted a Mitigated Negative Declaration (MND) on July 5, 2005 for the proposed 55-unit project, which is adequate for consideration of this proposal. The MND contemplated service by the Santa Clarita Valley County Sanitation District and concluded that the project would have no significant wastewater-related impacts.

***Correspondence:*** No correspondence has been received.

**Recommended Action:**

1. Open the protest hearing and receive written protests.
2. Close the protest hearing.
3. Instruct the Executive Officer, pursuant to Government Code Section 57075, to determine the value of protests filed and not withdrawn and report back to the Commission with the results.
4. Based upon the results of the protest hearing either adopt a resolution terminating the annexation proceedings if a majority protest exists, ordering Annexation No. 1016 to the Santa Clarita Valley Sanitation District of Los Angeles County directly if written protests have been filed and not withdrawn by owners of land who own less than 50 percent of the total assessed value of land within the affected territory.

**RESOLUTION NO. 2012-00PR  
RESOLUTION OF THE LOCAL AGENCY FORMATION  
COMMISSION FOR LOS ANGELES COUNTY  
MAKING DETERMINATIONS ORDERING  
"ANNEXATION NO. 1016 TO THE  
SANTA CLARITA VALLEY SANITATION DISTRICT  
OF LOS ANGELES COUNTY (SCVSD)"**

WHEREAS, the SCVSD filed an application to initiate proceedings before the Local Agency Formation Commission for Los Angeles County (the "Commission") pursuant to Part 3, Division 3, Title 5 of the California Government Code (commencing with section 56000, the Cortese-Knox-Hertzberg Local Government Reorganization Act of 2000), for the annexation of territory to the SCVSD; and

WHEREAS, the principal reason for the proposed annexation is to provide offsite sewage disposal for 55 proposed condominiums; and

WHEREAS, a description of the boundaries and map of the proposal are set forth in Exhibits "A" and "B", attached hereto and by this reference incorporated herein; and

WHEREAS, the territory consists of 10.141± acres and is uninhabited; and

WHEREAS, the short-form designation given this proposal is "Annexation No. 1016 to the Santa Clarita Valley Sanitation District of Los Angeles County"; and

WHEREAS, on August 8, 2012, the Commission approved Annexation No. 1016 to the SCVSD; and

WHEREAS, pursuant to Government Code Section 57002, the Executive Officer of the Commission has set October 10, 2012 as the date for the protest hearing and has given notice thereof; and

WHEREAS, at the time and place fixed in the notice, the hearing was held, and

any and all oral or written protests, objections and evidence were received and considered; and

WHEREAS, the Commission, acting as the conducting authority, has the ministerial duty of tabulating the value of protests filed and not withdrawn and either terminating these proceedings if a majority protest exists or ordering the annexation directly if there is no majority protest.

NOW, THEREFORE, BE IT RESOLVED as follows:

1. The Commission finds that the number of registered voters within the boundary of the territory is 0. The number of property owners is 57 and the total assessed value of land within the affected territory is \$2,687,991.
2. The Commission finds that the number of written protests filed in opposition to Annexation No. 1016 to the SCVSD and not withdrawn is \_\_\_, which, even if valid, represents owners of land who own less than 50 percent of the total assessed value of land within the affected territory.
3. The Commission hereby orders the annexation of the territory described in Exhibits "A" and "B" hereto, to the SCVSD.

4. Pursuant to Government Code section 56886, the annexation shall be subject to the following terms and conditions:
  - a. The territory so annexed shall be subject to the payment of such service charges, assessments or taxes as the SCVSD may legally impose.
  - b. The regular County assessment roll shall be utilized by the SCVSD.
  - c. The affected territory will be taxed for existing bonded indebtedness, if any, of the SCVSD.
  - d. Except to the extent in conflict with a through c, above, the general terms and conditions contained in Chapter 2 of Part 5, Division 3, Title 5 of the California Government Code (commencing with Government Code Section 57325) shall apply to this annexation.
5. The Executive Officer is directed to transmit a certified copy of this resolution to the General Manager of the District, upon the District's payment of the applicable fees required by Government Code Section 54902.5, and prepare, execute and file a certificate of completion with the appropriate public agencies, pursuant to Government Code Section 57000, *et seq.*

PASSED AND ADOPTED this 10<sup>th</sup> day of October 2012.

Ayes:

Noes:

Absent:

Abstain:

**LOCAL AGENCY FORMATION COMMISSION  
FOR THE COUNTY OF LOS ANGELES**

---

**PAUL A. NOVAK, AICP**  
**Executive Officer**



Special District Risk  
Management Authority

Maximizing Protection.  
Minimizing Risk.

1112 I Street, Suite 300  
Sacramento, California 95814-2865  
T 916.231.4141  
T 800.537.7790  
F 916.231.4111  
www.sdrma.org



RECEIVED

2012 SEP 10 AM 9:01

LOCAL AGENCY  
FORMATION COMMISSION  
FOR LOS ANGELES COUNTY

September 5, 2012

Mr. Edward G. Gladbach  
Chairman  
Local Agency Formation Commission of Los Angeles County  
80 S. Lake Avenue, Suite 870  
Pasadena, California 91101

**Re: President's Special Acknowledgement Award - Workers' Compensation Program**

Dear Mr. Gladbach:

This letter is to formally acknowledge the dedicated efforts of the Local Agency Formation Commission of Los Angeles County's Governing Body, management and staff towards proactive loss prevention and workplace safety. The President's Special Acknowledgement Award is to recognize members with no "paid" claims during the prior five consecutive program years in either the Property/Liability or Workers' Compensation Programs.

A "paid" claim for the purposes of this recognition represents the first payment on an open claim during the prior program year. Your agency's efforts have resulted in no "paid" workers' compensation claims for the prior 5 consecutive program years including 2011-12. This is an outstanding accomplishment that serves as an example for all SDRMA members!

It is through the efforts of members such as Local Agency Formation Commission of Los Angeles County that SDRMA has been able to continue providing affordable workers' compensation coverage to over 372 public agencies throughout California. While 222 members or 60% in the workers' compensation program had no "paid" claims in program year 2011-12, 104 members or 28% had no paid claims for the prior 5 consecutive years.

In addition to this annual recognition, members with no "paid" claims during 2011-12 earn 2 credit incentive points (CIPs) reducing their annual contribution amount and members with no "paid" claims for the prior 5 consecutive program years will earn 3 additional bonus CIPs. Also, members without claims receive a lower "experience modification factor" (EMOD) which also reduces their annual contribution amount.

On behalf of the SDRMA Board of Directors and staff, it is my privilege to congratulate the Governing Body, management and staff of Local Agency Formation Commission of Los Angeles County for their commitment to proactive loss prevention and safety in the workplace.

Sincerely,  
Special District Risk Management Authority

David Aranda, President  
Board of Directors





*President's Special Acknowledgement Award*

THE PRESIDENT OF THE SPECIAL DISTRICT RISK MANAGEMENT AUTHORITY  
HEREBY GIVES SPECIAL RECOGNITION TO

**Local Agency Formation Commission of Los Angeles County**

The President's Special Acknowledgement Award is to recognize members with no "paid" claims during the prior five consecutive program years in the Workers' Compensation Program. A "paid" claim for the purposes of this recognition represents the first payment on an open claim during that same period. Congratulations on your excellent claims record!

David Aranda, SDRMA Board President

September 5, 2012

Date